



**DISTRIBUTION OF CHICKENS IN SOUTH AFRICA**

**FOR THE PERIOD: January to March 2026  
(1Q2026)**

## CONTENTS

1	Provincial distribution of egg and broiler industry birds in South Africa .....	3
2	The number, type and distribution of poultry farms in South Africa .....	5
3	Distribution of farms according to bird volumes.....	9

## TABLES

Table 1:	Provincial distribution of chickens in South Africa .....	3
Table 2:	Number of farms on the AI database.....	5
Table 3:	Distribution of farms according to bird capacity .....	9
Table 4:	Classification of broiler industry farms .....	9
Table 5:	Classification of egg industry farms .....	10

## FIGURES

Figure 1:	Provincial distribution of the national chicken flock .....	3
Figure 2:	Provincial distribution of the broiler industry flock.....	4
Figure 3:	Provincial distribution of the egg industry flock.....	4
Figure 4:	Geographical location of broiler industry farms.....	5
Figure 5:	Geographical location of egg industry farms .....	6
Figure 6:	Density of broiler industry farms per local municipality.....	6
Figure 7:	Density of egg industry farms per local municipality.....	7
Figure 8:	Density of broiler industry birds per local municipality.....	8
Figure 9:	Density of egg industry birds per local municipality.....	8

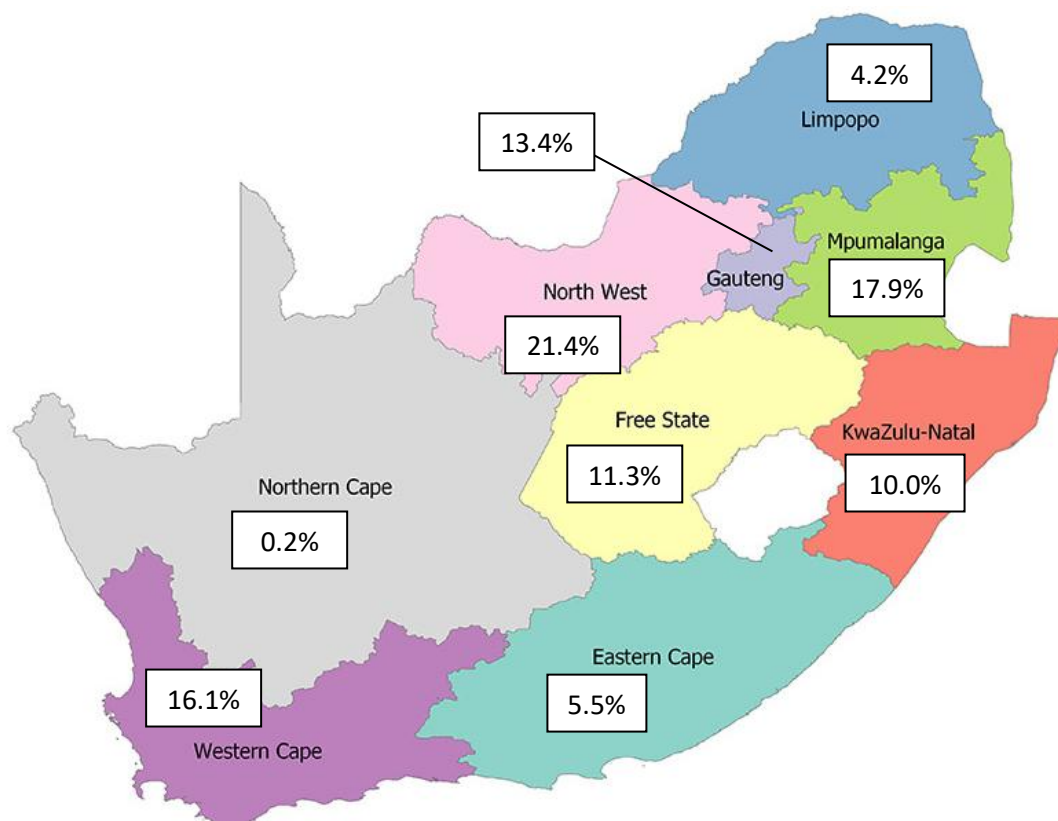
## 1 Provincial distribution of egg and broiler industry birds in South Africa

The provincial distribution of chicken farms, in terms of the broiler and egg industries, is given in Table 1. These figures were recorded during the course of the avian influenza (AI) survey, where producers provide data on actual bird numbers in addition to laboratory test results.

**Table 1: Provincial distribution of chickens in South Africa**

Province	Broiler industry		Egg industry		Total	
	birds	%	birds	%	birds	%
E. Cape	8 393 955	6.1	779 265	2.8	9 173 220	5.5
Free State	14 147 505	10.3	4 554 121	16.2	18 701 626	11.3
Gauteng	16 372 280	11.9	5 711 298	20.3	22 083 578	13.4
KwaZulu-Natal	13 159 705	9.6	3 316 771	11.8	16 476 476	10.0
Limpopo	4 636 292	3.4	2 317 482	8.2	6 953 774	4.2
Mpumalanga	26 829 093	19.6	2 741 220	9.7	29 570 313	17.9
North West	31 687 651	23.1	3 697 519	13.1	35 385 170	21.4
N. Cape	288 500	0.2	96 300	0.3	384 800	0.2
W. Cape	21 613 943	15.8	4 964 282	17.6	26 578 225	16.1
<b>Total</b>	<b>137 128 924</b>	<b>100.0</b>	<b>28 178 258</b>	<b>100.0</b>	<b>165 307 182</b>	<b>100.0</b>

Figure 1 gives the total number of chickens per province, as per the above table. The province of North West is home to the largest number of birds, followed by Mpumalanga. The provincial distributions of broiler and egg industry chickens are given in Figures 2 and 3 respectively.



**Figure 1: Provincial distribution of the national chicken flock**

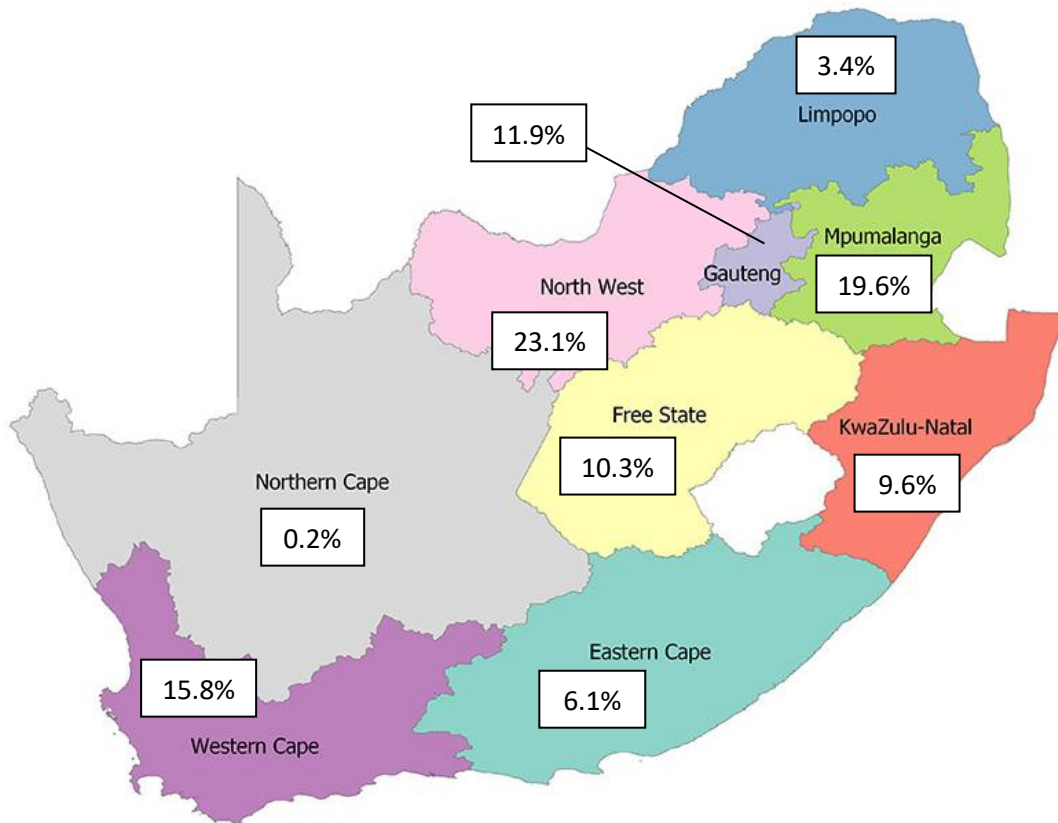


Figure 2: Provincial distribution of the broiler industry flock

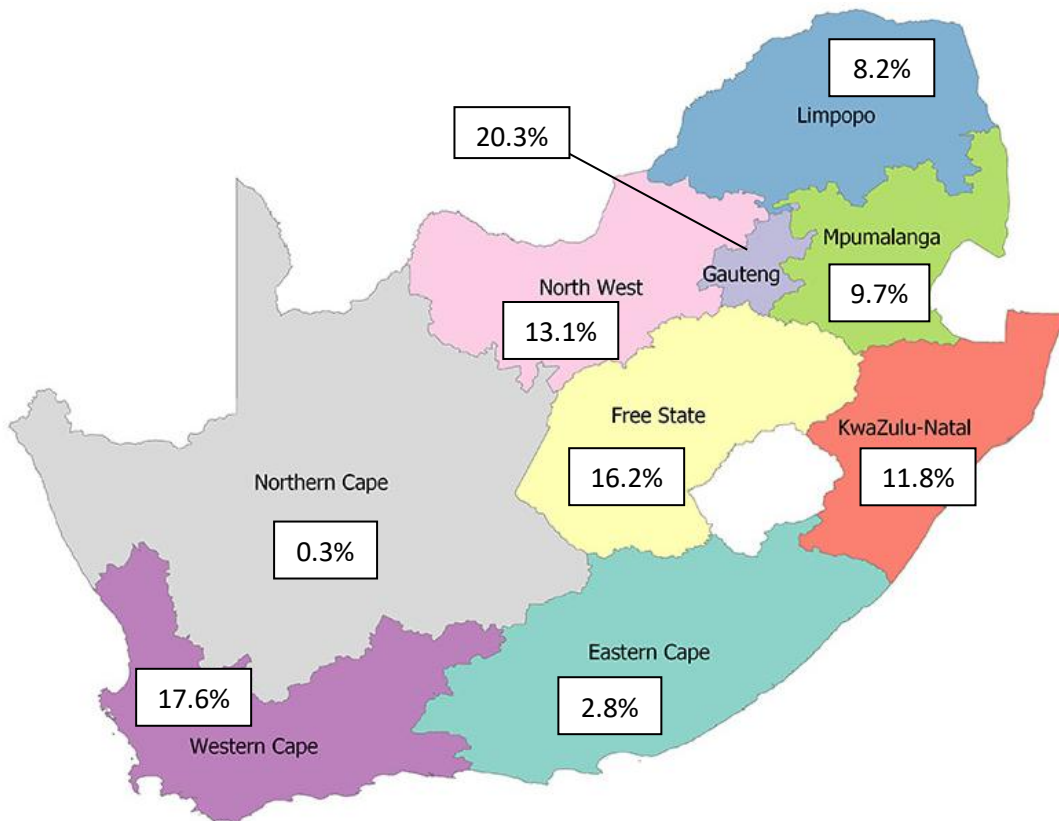


Figure 3: Provincial distribution of the egg industry flock

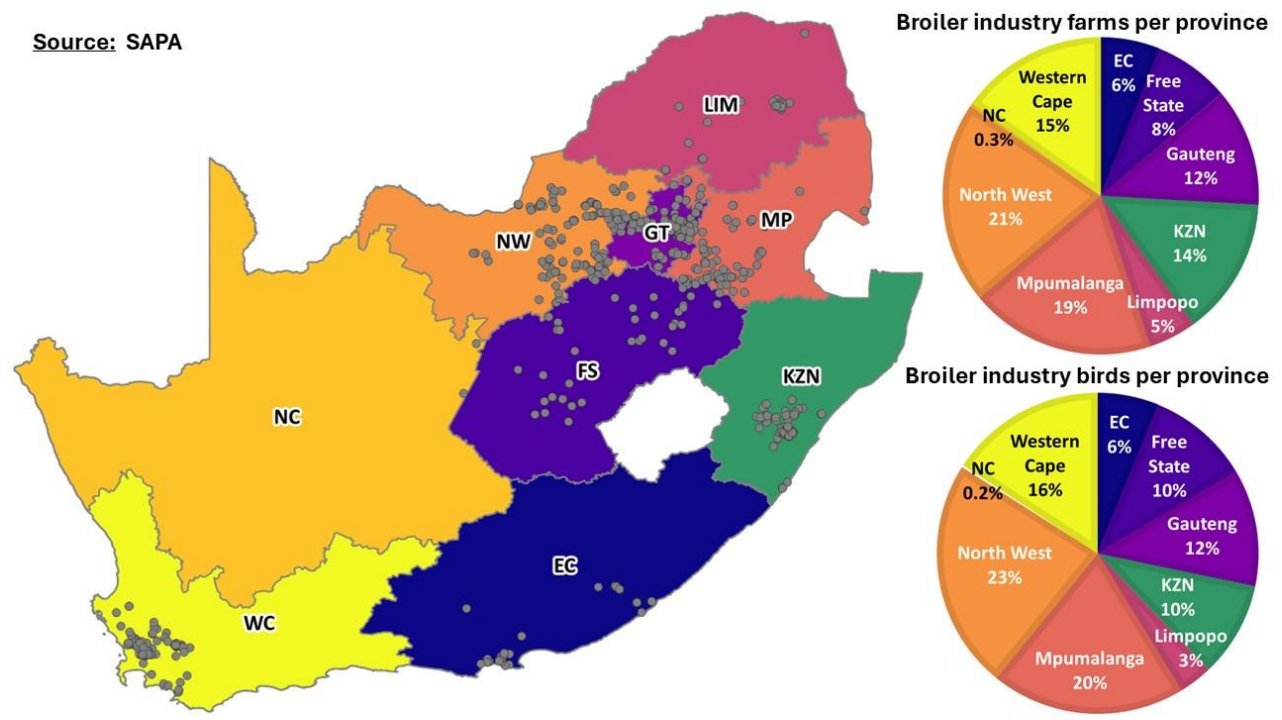
**2 The number, type and distribution of poultry farms in South Africa**

The number of farms on the AI database is given in Table 2. It also shows the birds numbers for the different farm types according to information supplied by producers. **It must be noted that the number of laying hens on egg producing farms is considerably underreported.**

**Table 2: Number of farms on the AI database**

Broiler industry	Farms	Birds
GGP and grandparent farms	26	638 712
Parent rearing farms	77	5 414 660
Broiler breeder farms	136	9 130 940
Broiler rearing farms	456	121 944 612
<b>TOTAL</b>	<b>695</b>	<b>137 128 924</b>
Egg industry		
Grandparent farms	6	23 559
Parent rearing farms	7	174 500
Layer breeder farms	20	538 867
Pullet rearing farms	37	6 092 487
Layer farms (egg producing)	212	21 348 845
<b>TOTAL</b>	<b>282</b>	<b>28 178 258</b>
<b>Broiler and egg industries</b>	<b>977</b>	<b>165 307 182</b>

The nationwide distribution of broiler and egg sector farms in the AI database is shown in Figures 4 and 5 respectively. The pie charts show the percentage of farms and birds in each province. North West has the highest percentage of the broiler sector farms and birds, followed by Mpumalanga. Gauteng has the highest percentages of egg sector farms and birds.



**Figure 4: Geographical location of broiler industry farms**

Source: SAPA

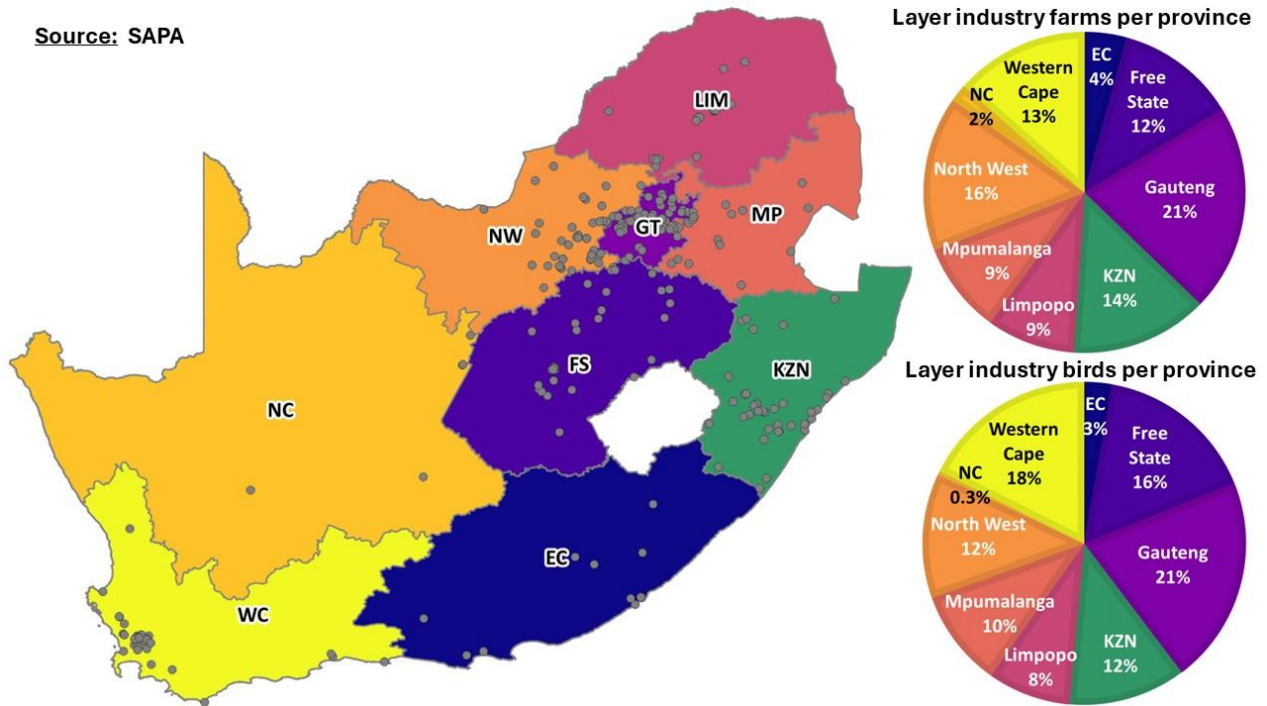
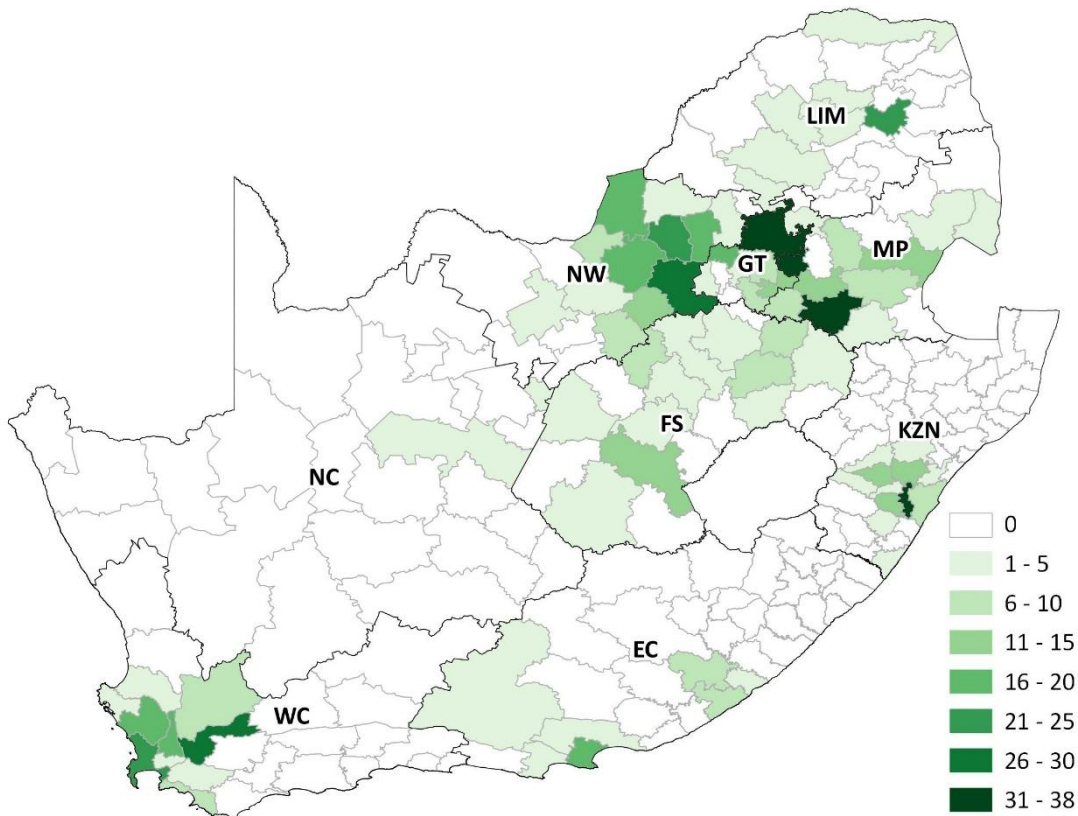


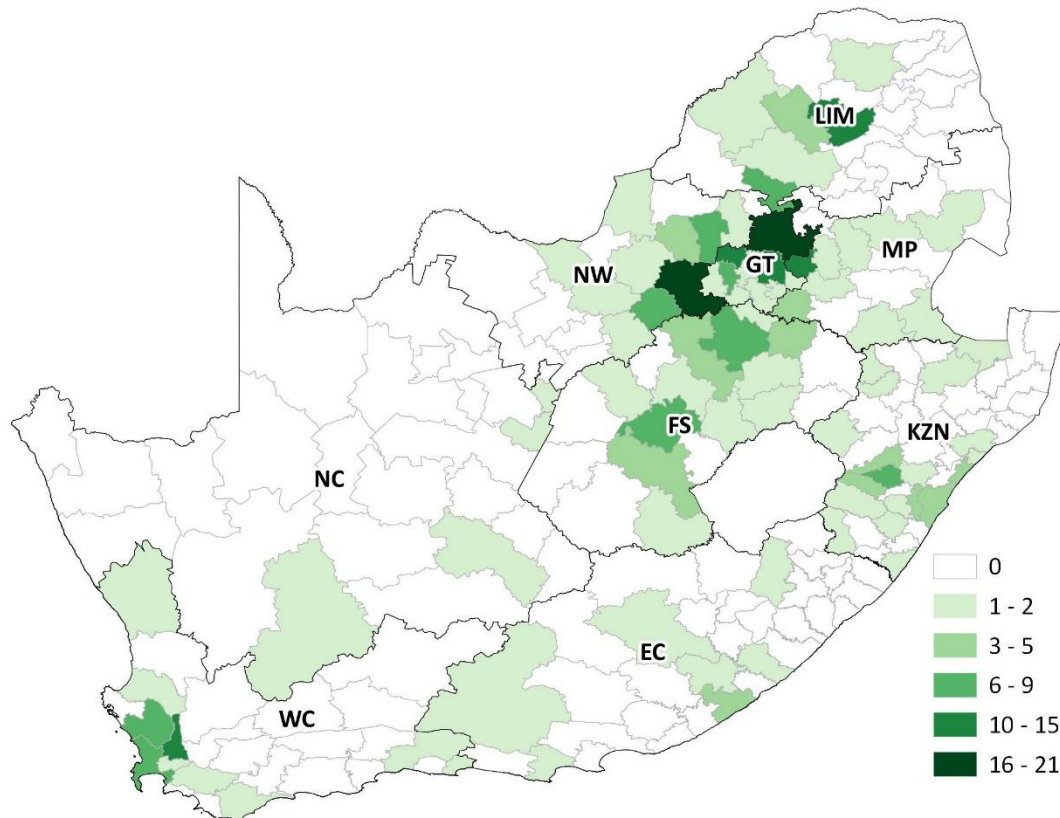
Figure 5: Geographical location of egg industry farms

Figures 6 and 7 show the local municipal density of the broiler and egg sector farms respectively. The local municipal districts containing the highest number of broiler industry farms are Victor Khanye (38) and Lekwa (36) in Mpumalanga and Mkhambathini (35) in KwaZulu-Natal. The highest density of egg industry farms is found in the local municipal districts of City of Tshwane (21) in Gauteng, Ventersdorp/Tlokwe (17) in North West and Mogale City (14) in Gauteng.



Source: SAPA

Figure 6: Density of broiler industry farms per local municipality



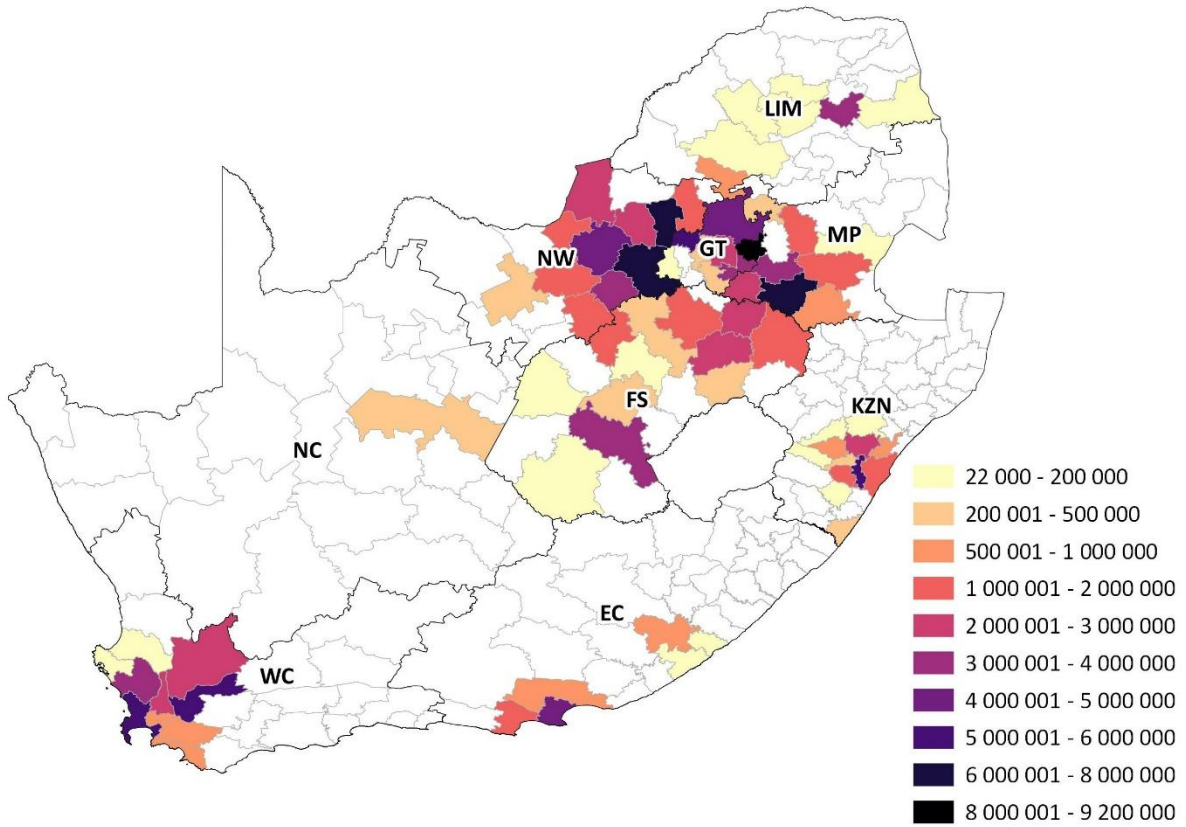
Source: SAPA

**Figure 7: Density of egg industry farms per local municipality**

Figures 8 and 9 indicate the density of broiler and egg sector birds per local municipality.

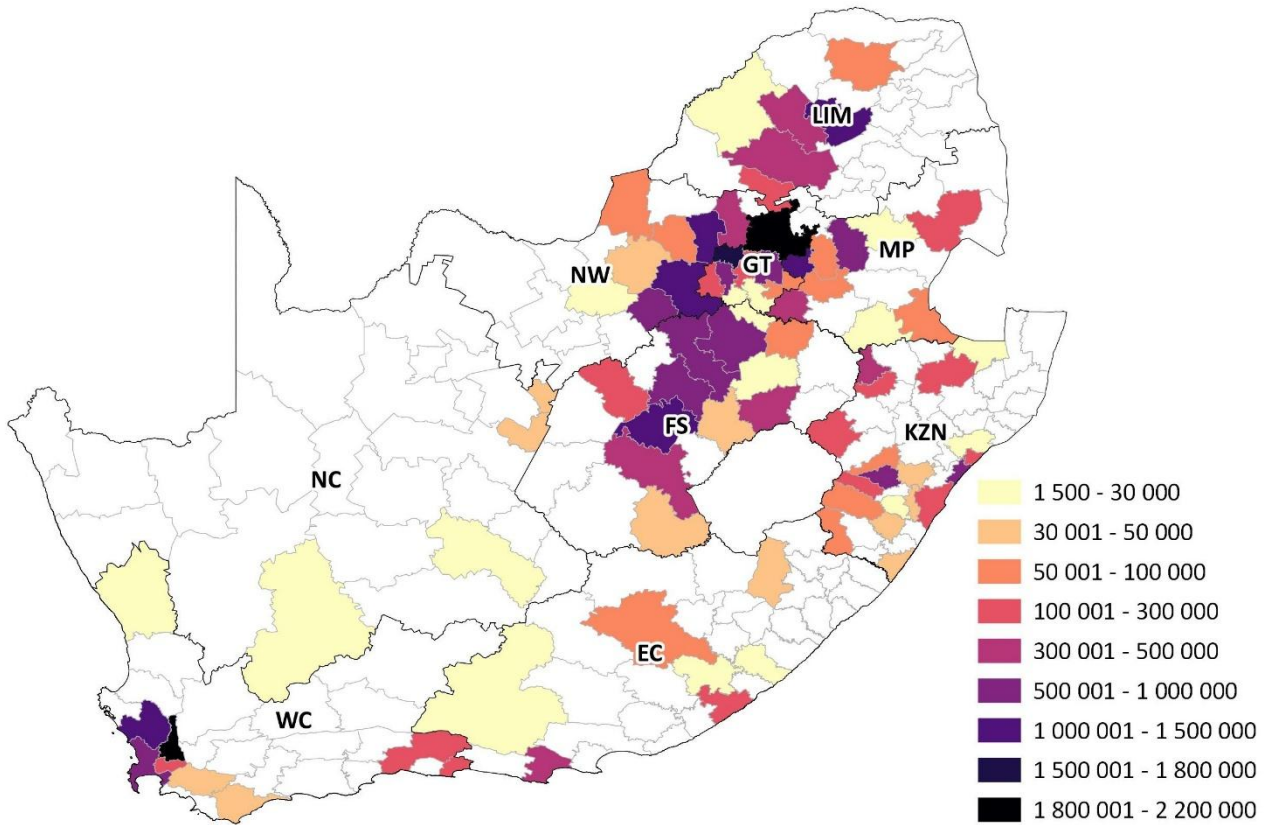
In the broiler industry, the Mpumalanga local municipalities of Victor Khanye and Lekwa have 9.18 and 7.90 million birds respectively. Rustenburg and Ventersdorp/Tlokwe in North West have 6.77 and 6.59 million birds respectively.

In the egg industry, the Western Cape local municipality of Drakenstein has 2.17 million birds and Gauteng's City of Tshwane and Mogale City have 2.11 and 1.79 million birds respectively. Also in the Western Cape, 1.44 million birds are located in the local municipal district of Swartland.



Source: SAPA

Figure 8: Density of broiler industry birds per local municipality



Source: SAPA

Figure 9: Density of egg industry birds per local municipality

### 3 Distribution of farms according to bird volumes

Table 3 shows the distribution of farms according to the size of the operation. Tables 4 and 5 provide a breakdown of producers that are registered on the AI database, according to the three categories: subsistence, small commercial and large commercial farmers. The number of subsistence farmers reported here represents those that take part in SAPA's statistical surveys. It is not an accurate representation of the total number in South Africa.

**Table 3: Distribution of farms according to bird capacity**

Number of birds		Number of farms		
From	To	Broiler industry	Egg industry	Total
700 001	and more	13	0	13
600 001	700 000	8	1	9
500 001	600 000	15	2	17
400 001	500 000	21	7	28
300 001	400 000	96	11	107
200 001	300 000	141	18	159
100 001	200 000	134	58	192
90 001	100 000	7	3	10
80 001	90 000	21	8	29
70 001	80 000	12	17	29
60 001	70 000	12	4	16
50 001	60 000	14	13	27
40 001	50 000	46	16	62
30 001	40 000	62	21	83
20 001	30 000	20	22	42
15 001	20 000	9	21	30
10 001	15 000	20	13	33
5 001	10 000	2	17	19
1 501	5 000	4	7	11
501	1 500	0	3	3
101	500	0	0	0
1	100	38	20	58
Total		695	282	977

**Table 4: Classification of broiler industry farms**

Category	Birds/cycle	No. farms
Subsistence farmers	1 - 1 500	38
Small commercial farmers	1 501 - 40 000	117
Large commercial farmers	40 001 +	540
Total		695

**Table 5: Classification of egg industry farms**

Category	No. birds	No. farms
Subsistence farmers	1 - 500	20
Small commercial farmers	501 - 50 000	120
Large commercial farmers	50 001 +	142
<b>Total</b>		<b>282</b>

*Data collated by Silverpath Consulting  
Report compiled by Leading Edge Poultry Software*

**Disclaimer:** The views expressed in SAPA STATS reports reflect those of SAPA in collaboration with its independent consultants and do not constitute any specific advice as to decisions or actions that should be taken. While every care has been taken in preparing documents no representation nor warranty or any expressed or implied undertaking is given and no responsibility or liability is accepted by SAPA as to the accuracy or completeness of the information contained herein whether as electronic data or as a finished report. SAPA or its independent consultants do not accept responsibility or liability for any damages of whatsoever nature which any person may suffer as a result of any decision or action taken on the basis of the information contained herein. All opinions and estimates contained in the reports may be changed after publication without notice.

*These statistical reports and/or electronic data are placed in the public domain and may be used by other parties conditional to the source of the data/ report being attributed to SAPA.*