



DISTRIBUTION OF CHICKENS IN SOUTH AFRICA

**FOR THE PERIOD: July to September 2025
(3Q2025)**

CONTENTS

1	Provincial distribution of egg and broiler industry birds in South Africa	3
2	The number, type and distribution of poultry farms in South Africa	5
3	Distribution of farms according to bird volumes.....	9

TABLES

Table 1: Provincial distribution of chickens in South Africa	3
Table 2: Number of farms on the AI database.....	5
Table 3: Distribution of farms according to bird capacity	9
Table 4: Classification of broiler industry farms	9
Table 5: Classification of egg industry farms	10

FIGURES

Figure 1: Provincial distribution of the national chicken flock	3
Figure 2: Provincial distribution of the broiler industry flock.....	4
Figure 3: Provincial distribution of the egg industry flock.....	4
Figure 4: Geographical location of broiler industry farms.....	5
Figure 5: Geographical location of egg industry farms	6
Figure 6: Density of broiler industry farms per local municipality.....	6
Figure 7: Density of egg industry farms per local municipality.....	7
Figure 8: Density of broiler industry birds per local municipality	8
Figure 9: Density of egg industry birds per local municipality.....	8

1 Provincial distribution of egg and broiler industry birds in South Africa

The provincial distribution of chicken farms, in terms of the broiler and egg industries, is given in Table 1. These figures were recorded during the course of the avian influenza (AI) survey, where producers provide data on actual bird numbers in addition to laboratory test results.

Table 1: Provincial distribution of chickens in South Africa

Province	Broiler industry birds	%	Egg industry birds	%	Total birds	%
E. Cape	8 393 955	6.1	779 265	2.6	9 173 220	5.5
Free State	13 885 605	10.0	4 554 121	15.3	18 439 726	11.0
Gauteng	16 489 678	11.9	6 666 465	22.4	23 156 143	13.8
KwaZulu-Natal	13 259 705	9.6	3 316 771	11.2	16 576 476	9.9
Limpopo	4 636 292	3.4	2 317 482	7.8	6 953 774	4.1
Mpumalanga	26 815 043	19.4	2 741 220	9.2	29 556 263	17.6
North West	31 652 759	22.9	3 697 519	12.4	35 350 278	21.1
N. Cape	273 000	0.2	96 300	0.3	369 300	0.2
W. Cape	22 779 861	16.5	5 545 796	18.7	28 325 657	16.9
Total	138 185 898	100.0	29 714 939	100.0	167 900 837	100.0

Figure 1 gives the total number of chickens per province, as per the above table. The province of North West is home to the largest number of birds, followed by Mpumalanga. The provincial distributions of broiler and egg industry chickens are given in Figures 2 and 3 respectively.

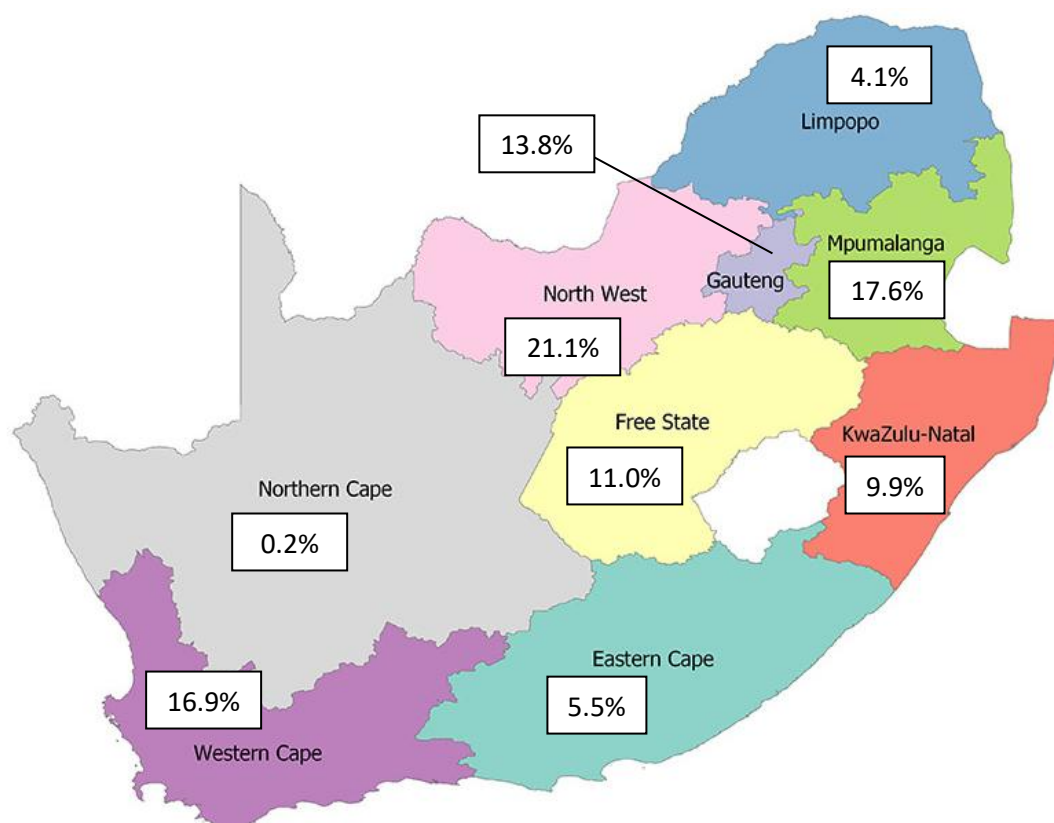


Figure 1: Provincial distribution of the national chicken flock

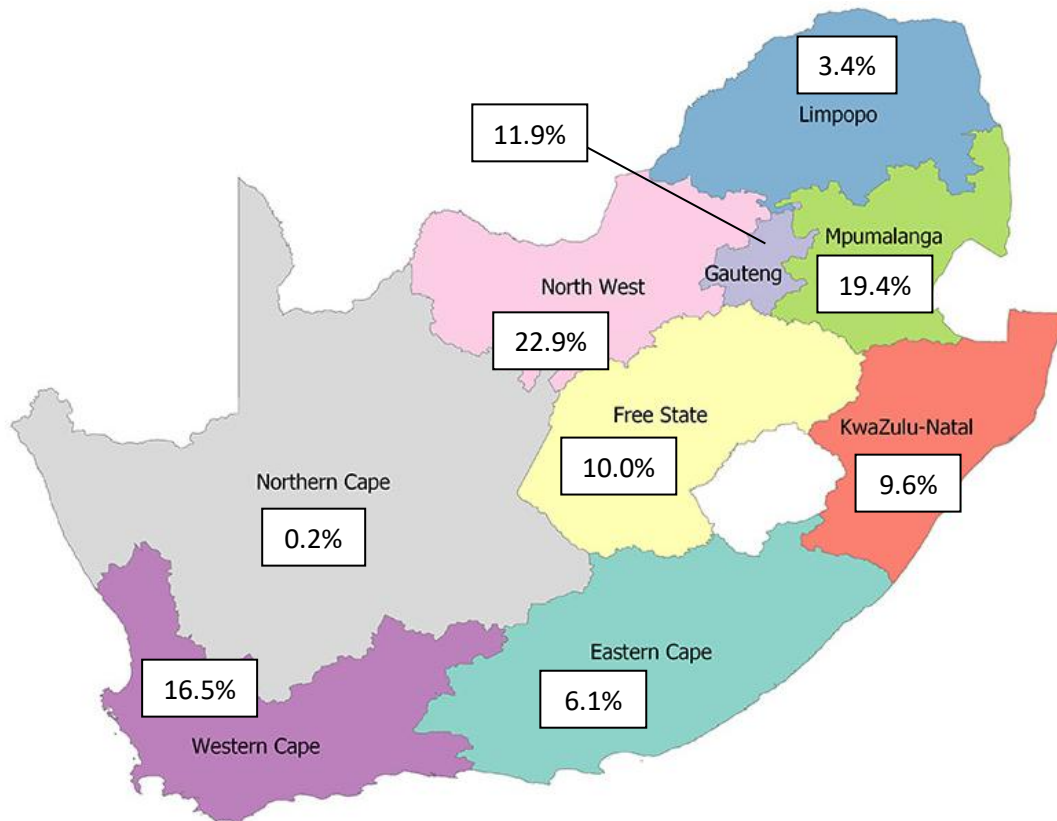


Figure 2: Provincial distribution of the broiler industry flock

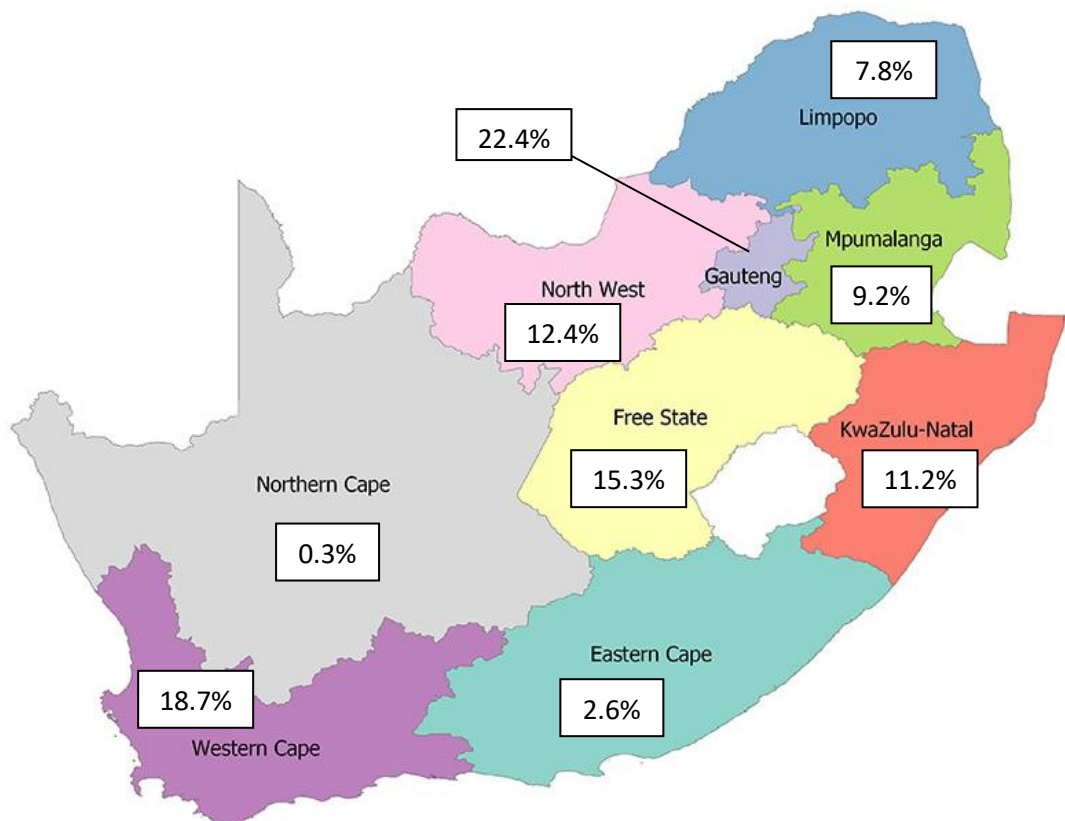


Figure 3: Provincial distribution of the egg industry flock

2 The number, type and distribution of poultry farms in South Africa

The number of farms on the AI database is given in Table 2. It also shows the birds numbers for the different farm types according to information supplied by producers.

Table 2: Number of farms on the AI database

Broiler industry	Farms	Birds
GGP and grandparent farms	25	622 512
Parent rearing farms	76	5 180 068
Broiler breeder farms	136	9 299 917
Broiler rearing farms	457	123 083 401
TOTAL	694	138 185 898
Egg industry	Farms	Birds
Grandparent farms	6	23 559
Parent rearing farms	6	144 500
Layer breeder farms	20	538 867
Pullet rearing farms	37	6 523 309
Layer farms (egg producing)	212	22 484 704
TOTAL	281	29 714 939
Broiler and egg industries	975	167 900 837

The nationwide distribution of broiler and egg sector farms in the AI database is shown in Figures 4 and 5 respectively. The pie charts show the percentage of farms and birds in each province. North West has the highest percentage of the broiler sector farms and birds, closely followed by Mpumalanga. Gauteng has the highest percentages of egg sector farms and birds.

Source: SAPA

Created by: Leading Edge Poultry Software

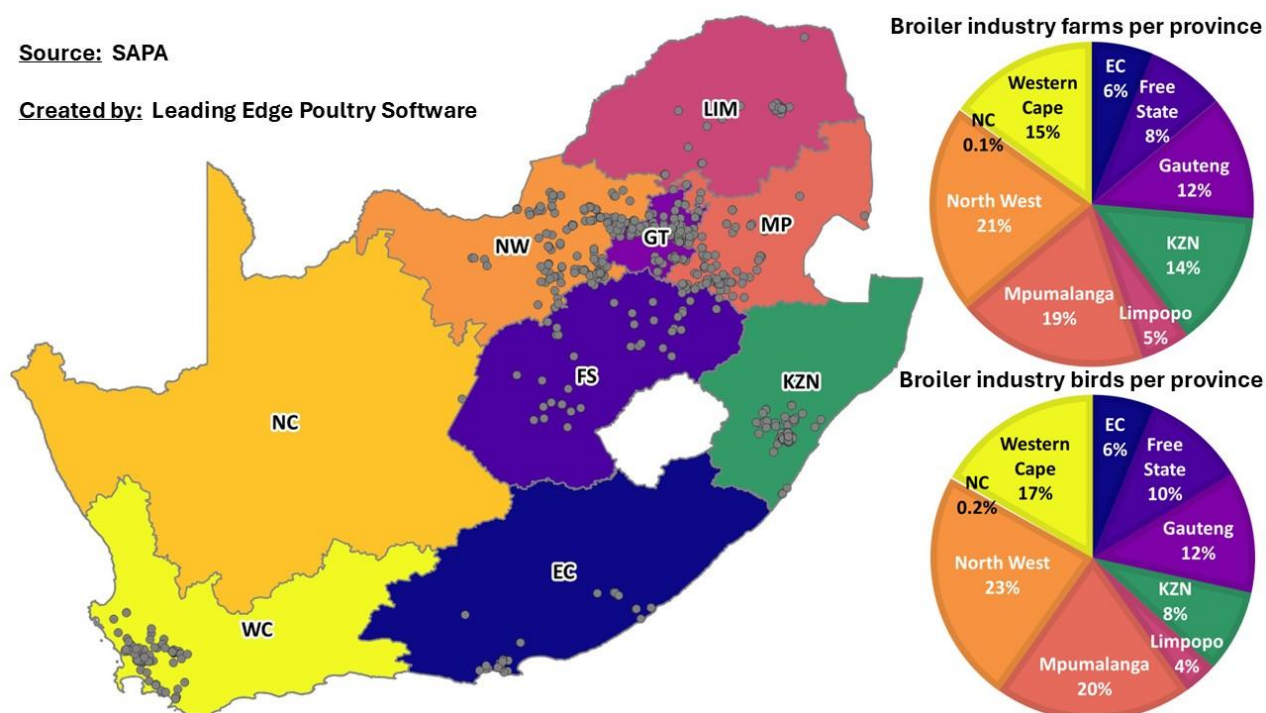


Figure 4: Geographical location of broiler industry farms

Source: SAPA

Created by: Leading Edge Poultry Software

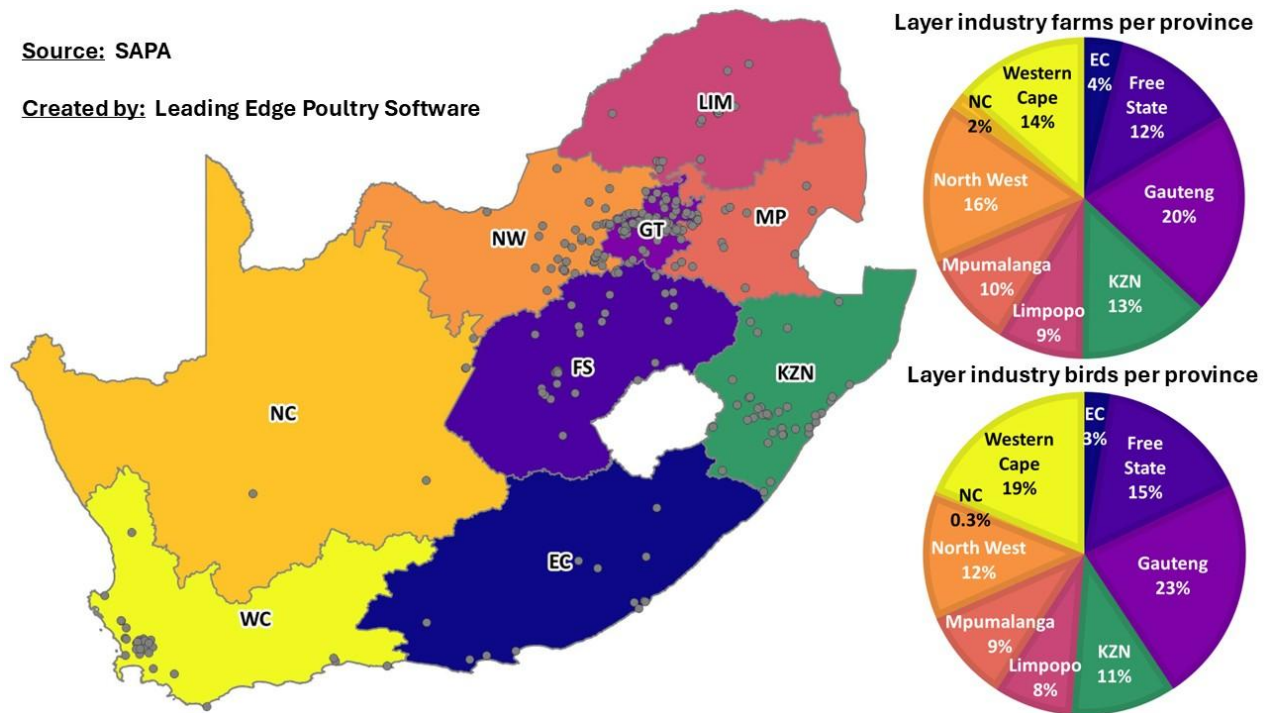
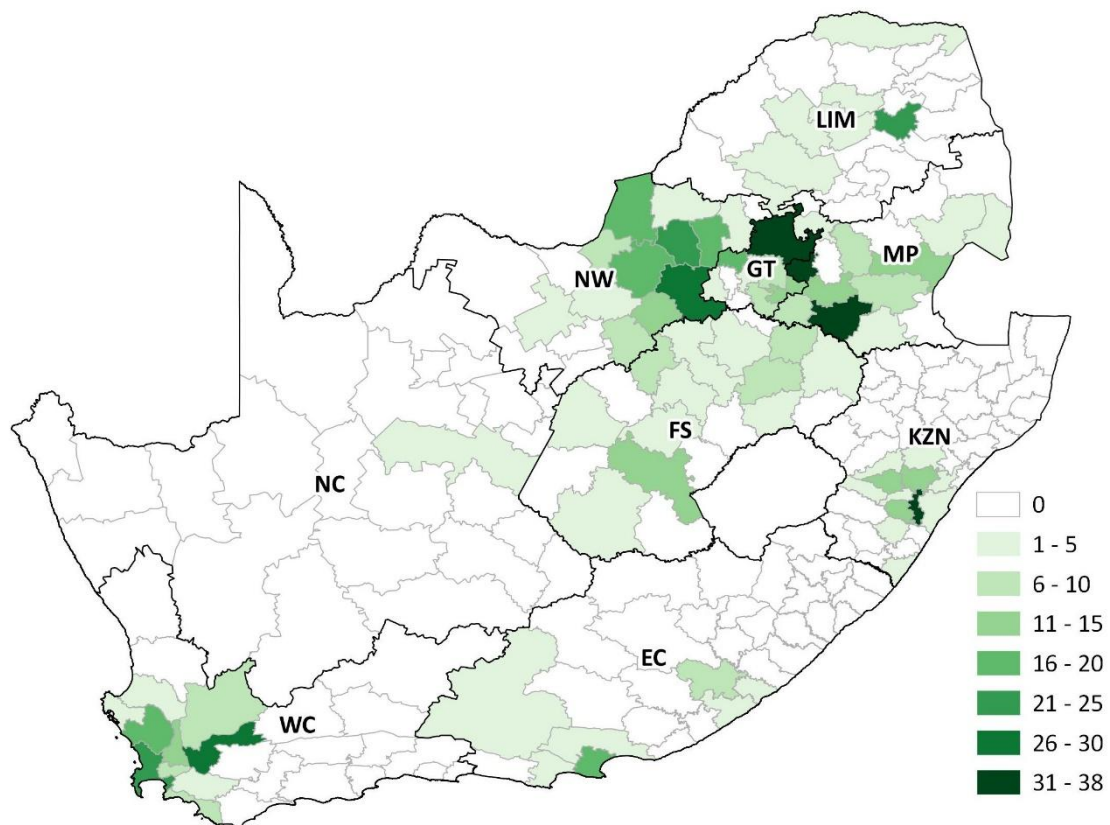


Figure 5: Geographical location of egg industry farms

Figures 6 and 7 show the local municipal density of the broiler and egg sector farms respectively. The local municipal districts containing the highest number of broiler industry farms are Mkhambathini (38) in KwaZulu-Natal, and Victor Khanye (37) and Lekwa (35) in Mpumalanga. The highest density of egg industry farms is found in the local municipal districts of City of Tshwane (19) and Mogale City (16) in Gauteng and JB Marks (16) in North West.



Source: SAPA

Created by: Leading Edge Poultry Software

Figure 6: Density of broiler industry farms per local municipality

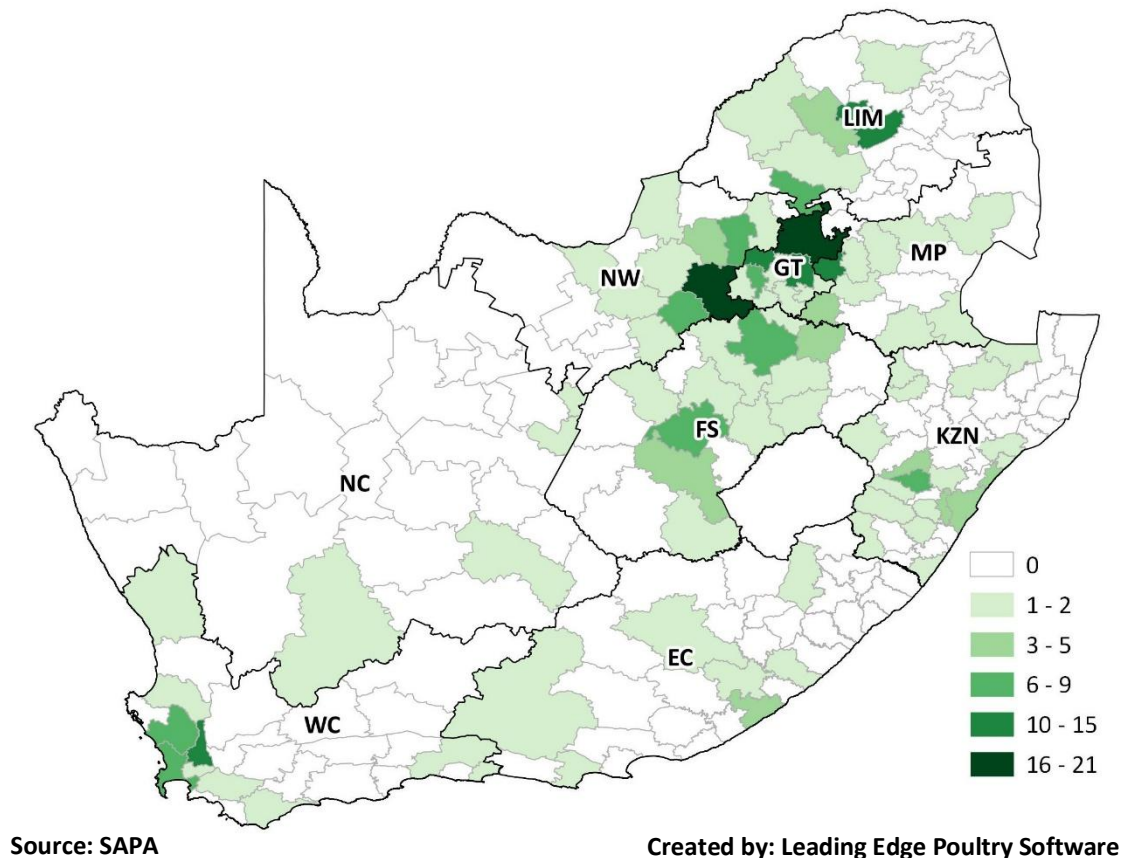
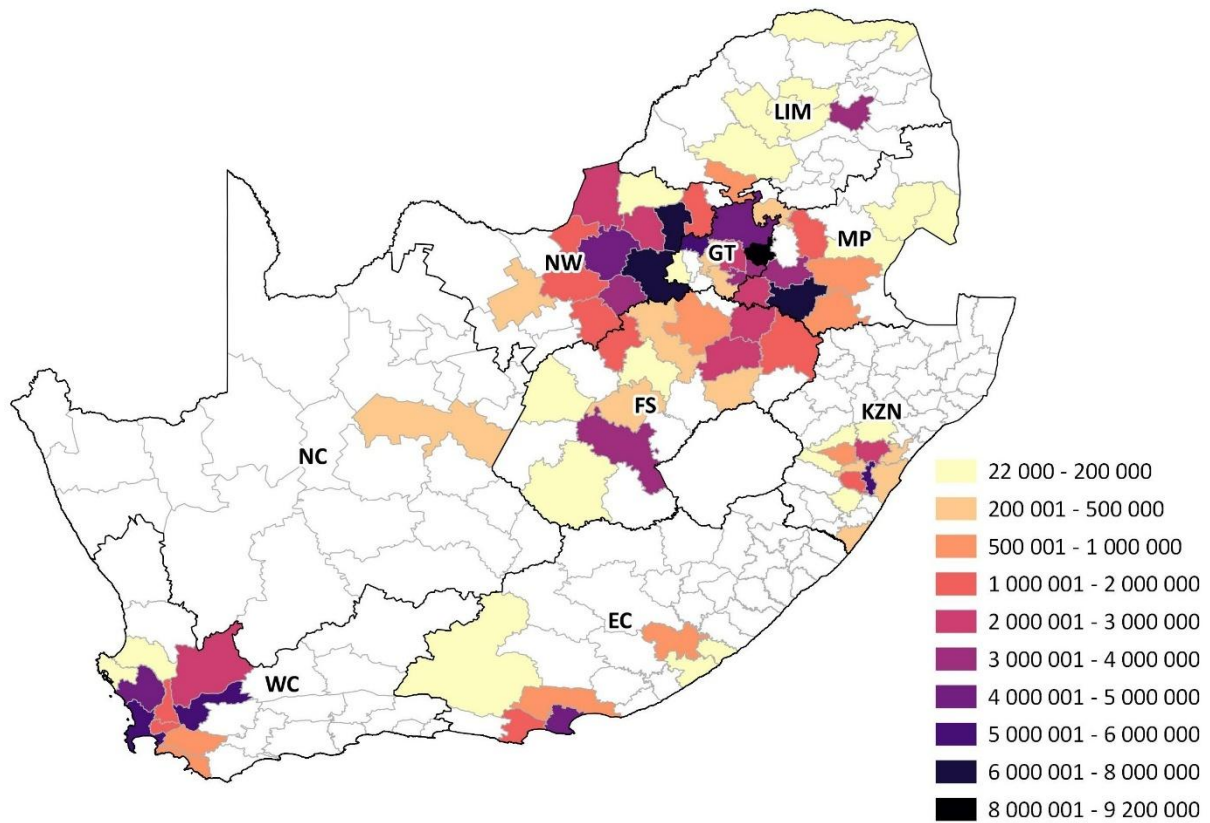


Figure 7: Density of egg industry farms per local municipality

Figures 8 and 9 indicate the density of broiler and egg sector birds per local municipality.

In the broiler industry, the Mpumalanga local municipalities of Victor Khanye and Lekwa have 8.91 and 7.08 million birds respectively. Rustenburg in North West has 6.94 million birds and 6.01 million birds are found in Swartland, Western Cape.

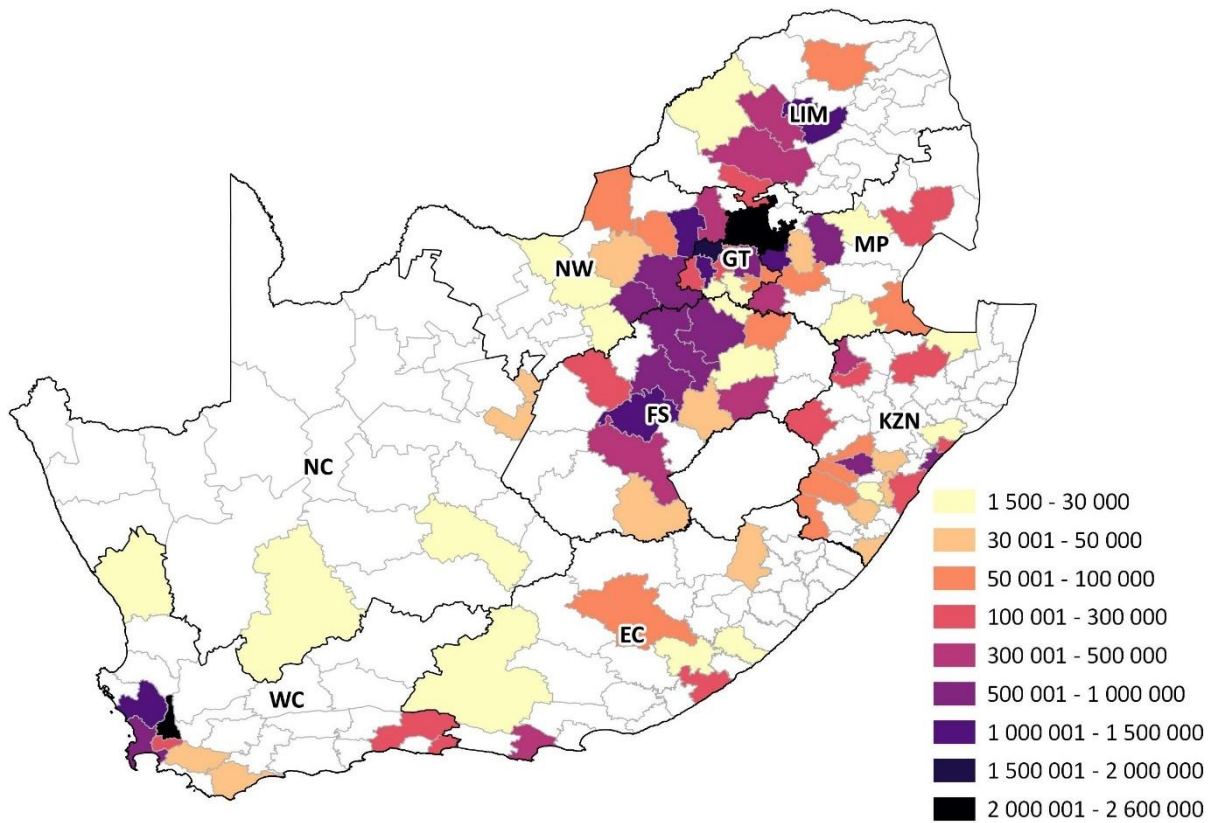
In the egg industry, 2.57 and 1.89 million birds are located in Gauteng's City of Tshwane and Mogale City respectively. In Western Cape, 1.97 and 1.66 million birds are located in the local municipal districts of Drakenstein and Swartland respectively.



Source: SAPA

Created by: Leading Edge Poultry Software

Figure 8: Density of broiler industry birds per local municipality



Source: SAPA

Created by: Leading Edge Poultry Software

Figure 9: Density of egg industry birds per local municipality

3 Distribution of farms according to bird volumes

Table 3 shows the distribution of farms according to the size of the operation. Tables 4 and 5 provide a breakdown of producers that are registered on the AI database, according to the three categories: subsistence, small commercial and large commercial farmers. The number of subsistence farmers reported here represents those that take part in SAPA's statistical surveys. It is not an accurate representation of the total number in South Africa.

Table 3: Distribution of farms according to bird capacity

Number of birds		Number of farms		
From	To	Broiler industry	Egg industry	Total
700 001	and more	15	0	15
600 001	700 000	7	4	11
500 001	600 000	15	2	17
400 001	500 000	22	7	29
300 001	400 000	94	11	105
200 001	300 000	140	18	158
100 001	200 000	137	57	194
90 001	100 000	8	3	11
80 001	90 000	21	8	29
70 001	80 000	11	17	28
60 001	70 000	13	4	17
50 001	60 000	16	13	29
40 001	50 000	45	15	60
30 001	40 000	60	22	82
20 001	30 000	24	20	44
15 001	20 000	9	21	30
10 001	15 000	14	13	27
5 001	10 000	4	17	21
1 501	5 000	4	7	11
501	1 500	0	3	3
101	500	0	0	0
1	100	35	19	54
Total		694	281	975

Table 4: Classification of broiler industry farms

Category	Birds/cycle	No. farms
Subsistence farmers	1 - 1 500	35
Small commercial farmers	1 501 - 40 000	115
Large commercial farmers	40 001 +	544
Total		694

Table 5: Classification of egg industry farms

Category	No. birds	No. farms
Subsistence farmers	1 - 500	19
Small commercial farmers	501 - 50 000	118
Large commercial farmers	50 001 +	144
Total		281

*Data collated by Silverpath Consulting
Report compiled by Leading Edge Poultry Software*

Disclaimer: The views expressed in SAPA STATS reports reflect those of SAPA in collaboration with its independent consultants and do not constitute any specific advice as to decisions or actions that should be taken. While every care has been taken in preparing documents no representation nor warranty or any expressed or implied undertaking is given and no responsibility or liability is accepted by SAPA as to the accuracy or completeness of the information contained herein whether as electronic data or as a finished report. SAPA or its independent consultants do not accept responsibility or liability for any damages of whatsoever nature which any person may suffer as a result of any decision or action taken on the basis of the information contained herein. All opinions and estimates contained in the reports may be changed after publication without notice.

These statistical reports and/or electronic data are placed in the public domain and may be used by other parties conditional to the source of the data/ report being attributed to SAPA.