



DISTRIBUTION OF CHICKENS IN SOUTH AFRICA

**FOR THE PERIOD: April to June 2024
(2Q2024)**

CONTENTS

1	Provincial distribution of egg and broiler industry birds in South Africa	3
2	The number, type and distribution of poultry farms in South Africa	5
3	Distribution of farms according to bird volumes	9

TABLES

Table 1: Provincial distribution of chickens in South Africa.....	3
Table 2: Number of farms on the AI database.....	5
Table 3: Distribution of farms according to bird capacity	9
Table 4: Classification of broiler industry farms	9
Table 5: Classification of egg industry farms	10

FIGURES

Figure 1: Provincial distribution of the national chicken flock	3
Figure 2: Provincial distribution of the broiler industry flock.....	4
Figure 3: Provincial distribution of the egg industry flock.....	4
Figure 4: Geographical location of broiler industry farms.....	5
Figure 5: Geographical location of egg industry farms.....	6
Figure 6: Density of broiler industry farms per local municipality	6
Figure 7: Density of egg industry farms per local municipality.....	7
Figure 8: Density of broiler industry birds per local municipality.....	8
Figure 9: Density of egg industry birds per local municipality.....	8

1 Provincial distribution of egg and broiler industry birds in South Africa

The provincial distribution of chicken farms, in terms of the broiler and egg industries, is given in Table 1. These figures were recorded during the course of the avian influenza (AI) survey, where producers provide data on actual bird numbers in addition to laboratory test results.

Table 1: Provincial distribution of chickens in South Africa

Province	Broiler industry		Egg industry		Total	
	birds	%	birds	%	birds	%
E. Cape	8 342 955	6.1	869 265	2.9	9 212 220	5.5
Free State	13 736 105	10.0	4 650 141	15.5	18 386 246	11.0
Gauteng	16 132 498	11.8	7 353 020	24.5	23 485 518	14.0
KwaZulu-Natal	10 899 705	7.9	3 605 539	12.0	14 505 244	8.7
Limpopo	4 702 293	3.4	2 334 503	7.8	7 036 796	4.2
Mpumalanga	27 114 409	19.8	2 447 836	8.2	29 562 245	17.7
North West	33 406 649	24.4	3 523 890	11.7	36 930 539	22.1
N. Cape	273 000	0.2	96 300	0.3	369 300	0.2
W. Cape	22 574 876	16.5	5 147 796	17.1	27 722 672	16.6
Total	137 182 490	100.0	30 028 290	100.0	167 210 780	100.0

Figure 1 gives the total number of chickens per province, as per the above table. The province of North West is home to the largest number of birds, followed by Mpumalanga. The provincial distributions of broiler and egg industry chickens are given in Figures 2 and 3 respectively.

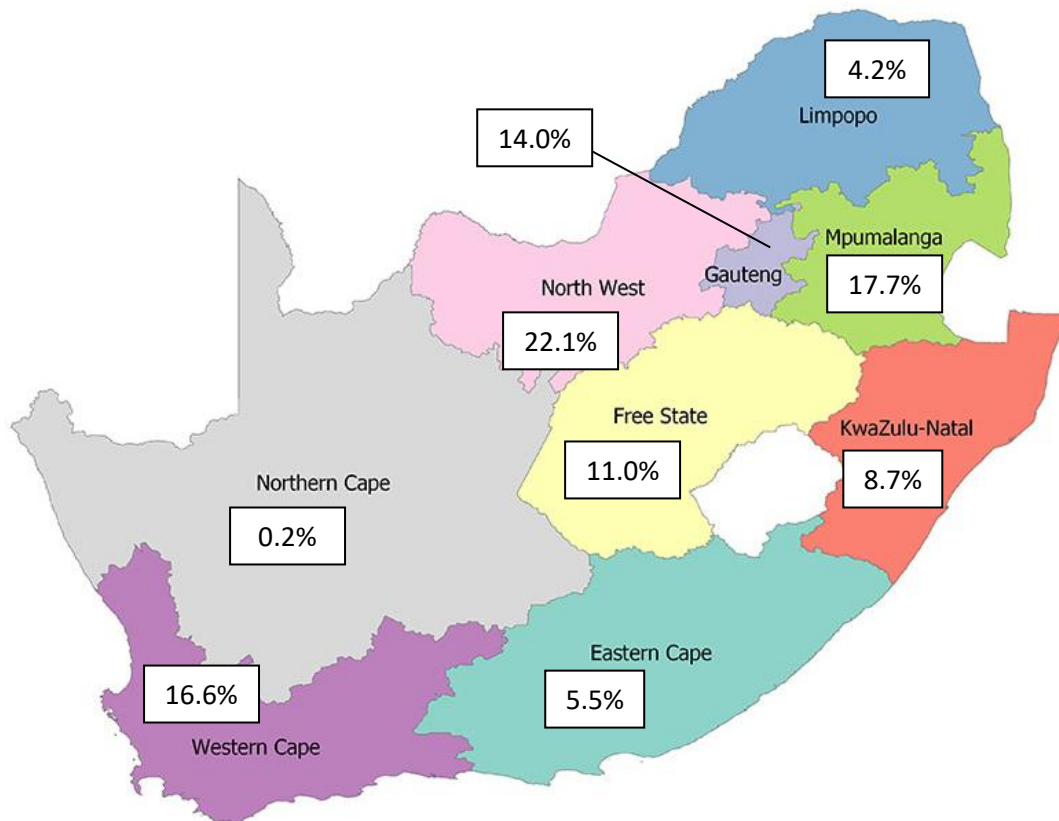


Figure 1: Provincial distribution of the national chicken flock

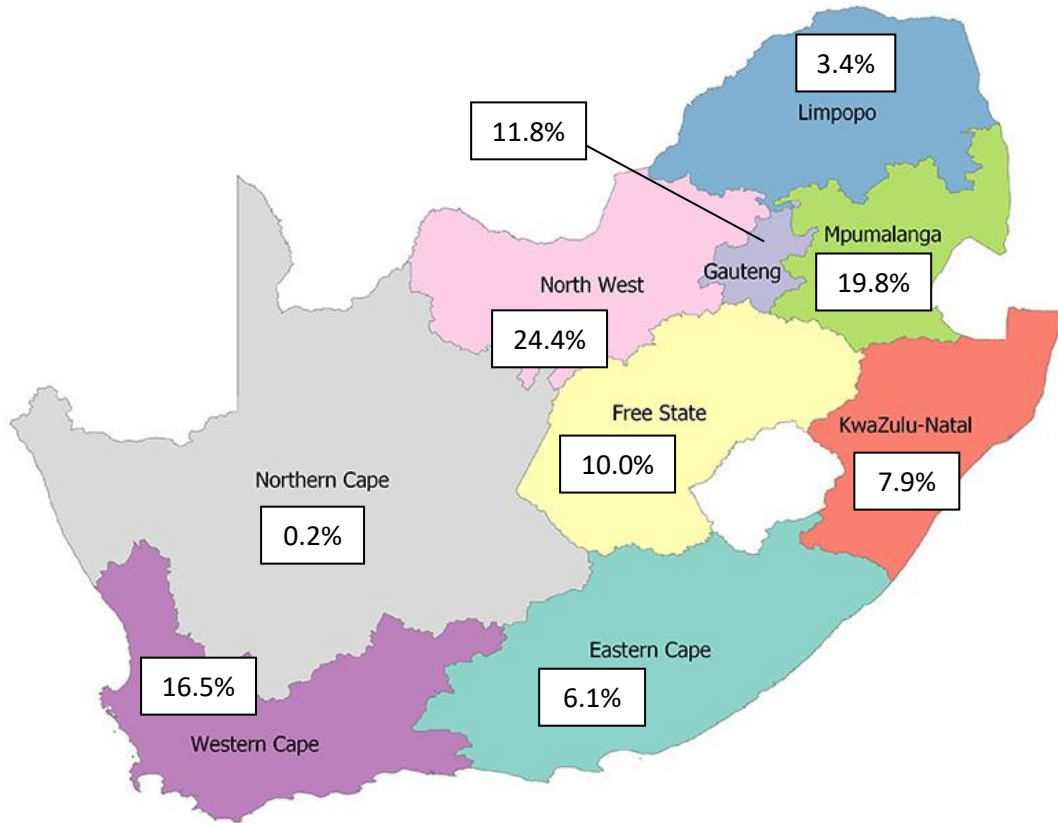


Figure 2: Provincial distribution of the broiler industry flock

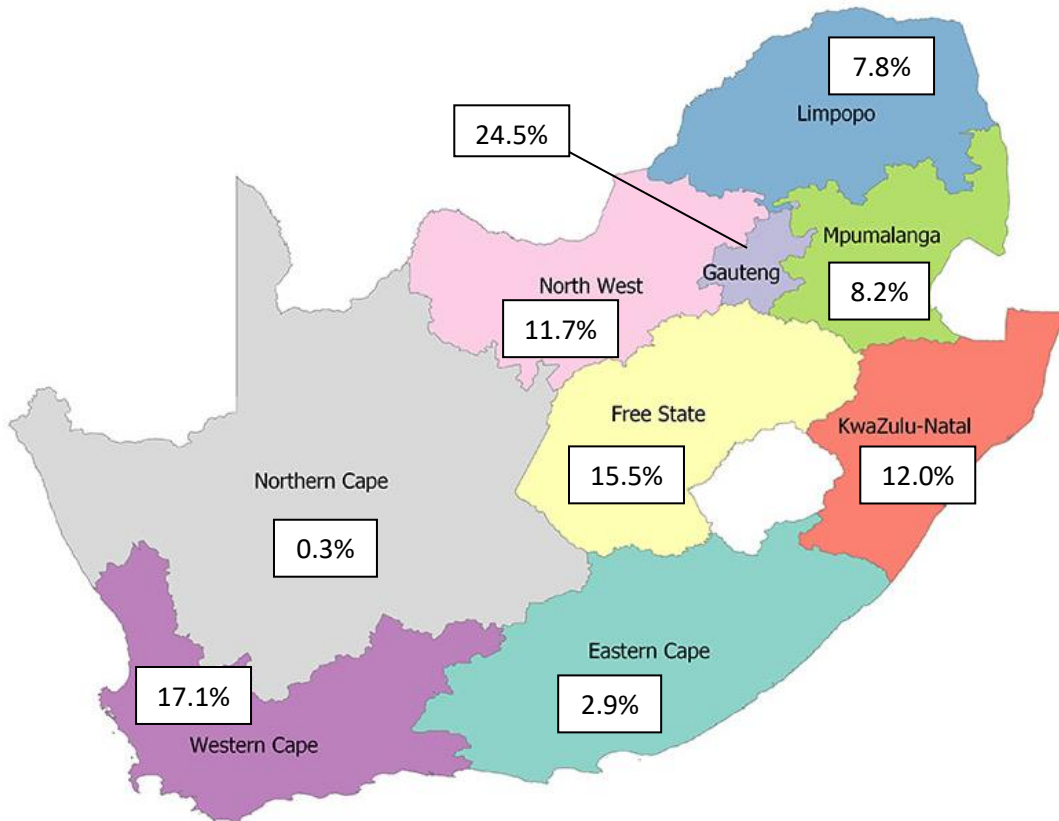


Figure 3: Provincial distribution of the egg industry flock

2 The number, type and distribution of poultry farms in South Africa

The number of farms on the AI database is given in Table 2. It also shows the birds numbers for the different farm types according to information supplied by producers.

Table 2: Number of farms on the AI database

Broiler industry	Farms	Birds
GGP and grandparent farms	25	651 378
Parent rearing farms	80	5 363 711
Broiler breeder farms	135	8 657 108
Broiler rearing farms	451	122 510 293
TOTAL	691	137 182 490
Egg industry		
Grandparent farms	6	23 559
Parent rearing farms	6	151 150
Layer breeder farms	16	583 272
Pullet rearing farms	44	7 694 386
Layer farms (egg producing)	210	21 575 923
TOTAL	282	30 028 290
Broiler and egg industries	973	167 210 780

The nationwide distribution of broiler and egg sector farms in the AI database is shown in Figures 4 and 5 respectively. The pie charts show the percentage of farms and birds in each province. North West has 21% of the farms and 24% of the broiler sector birds. It is closely followed by Mpumalanga. Gauteng has the highest percentages of egg sector farms (24%) and birds (25%).

Source: SAPA

Created by: Leading Edge Poultry Software

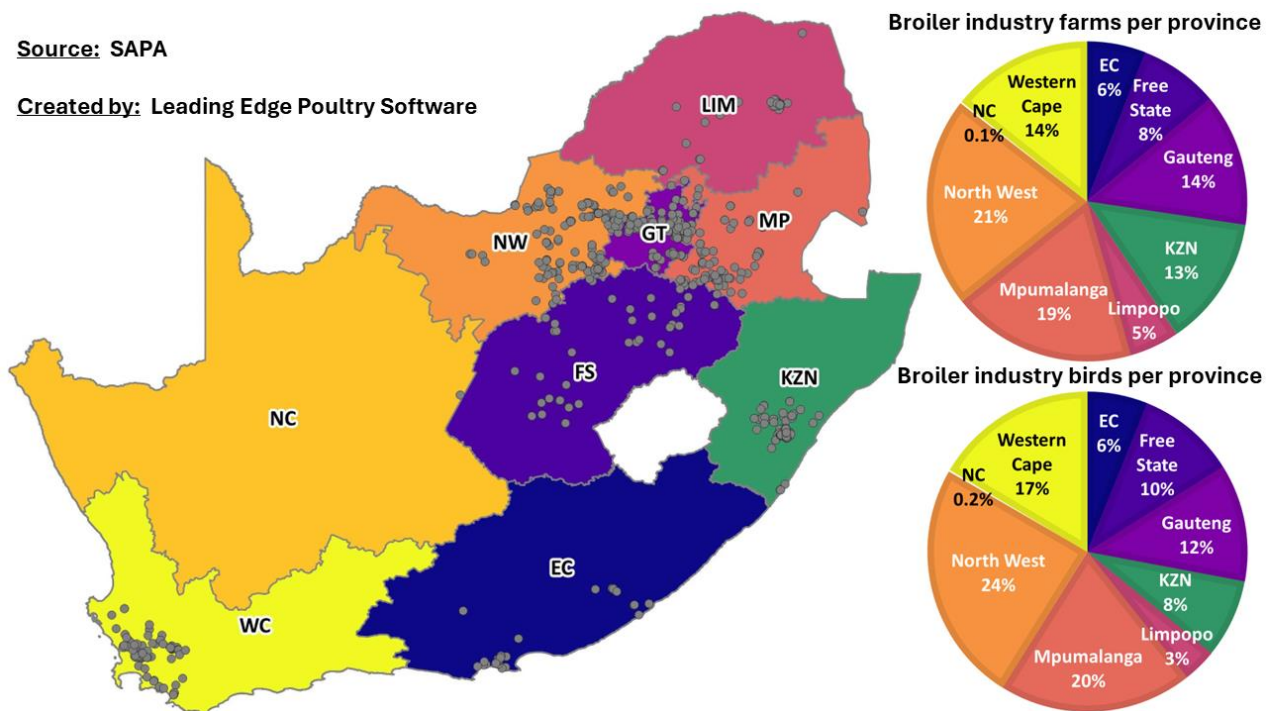


Figure 4: Geographical location of broiler industry farms

Source: SAPA

Created by: Leading Edge Poultry Software

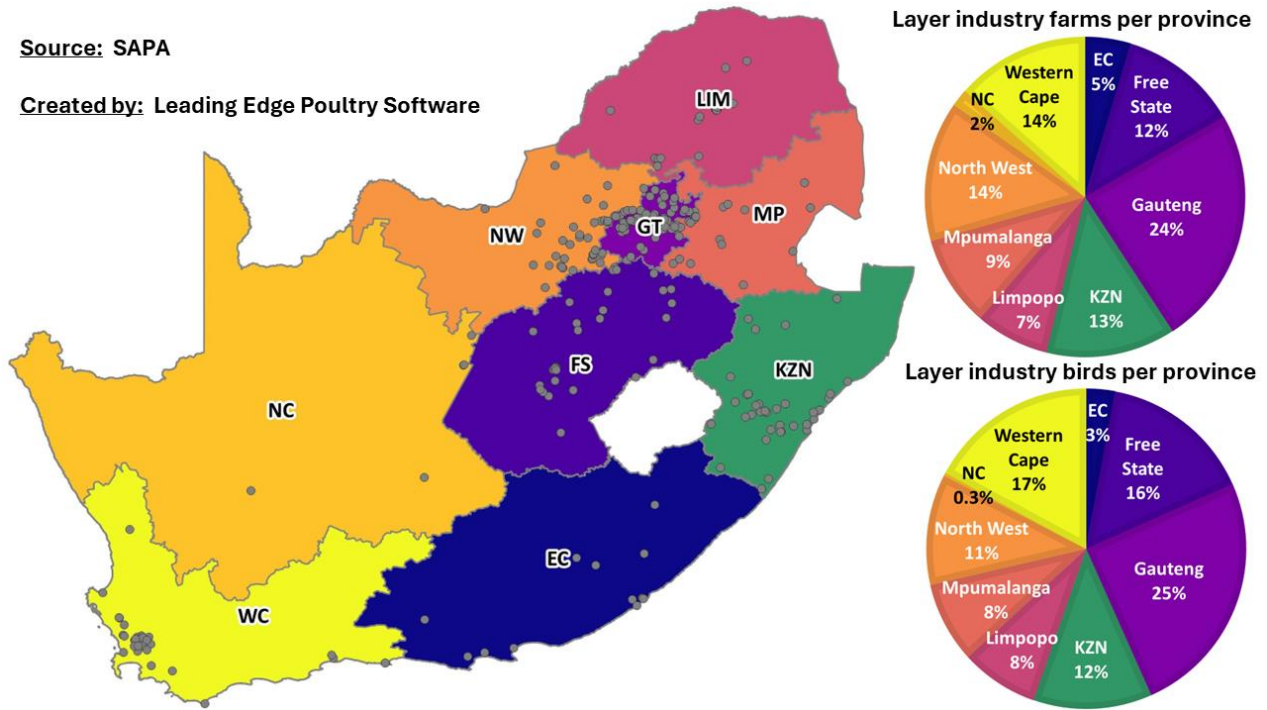
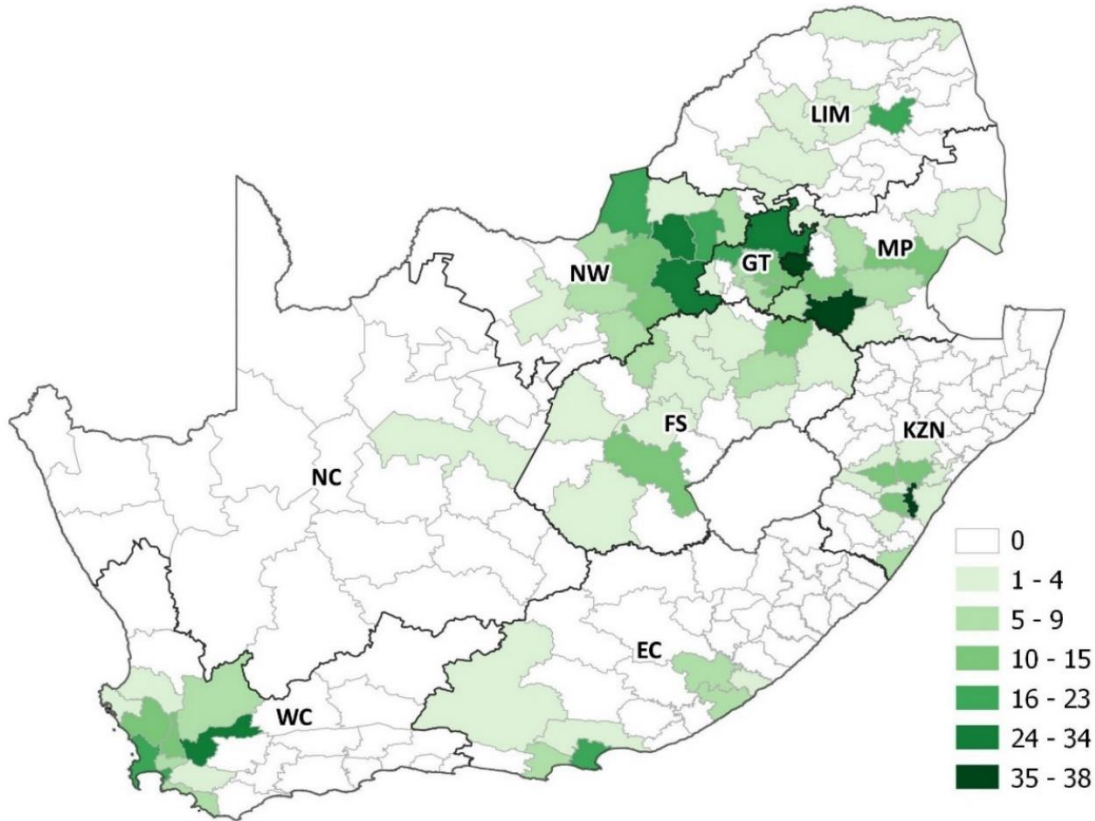


Figure 5: Geographical location of egg industry farms

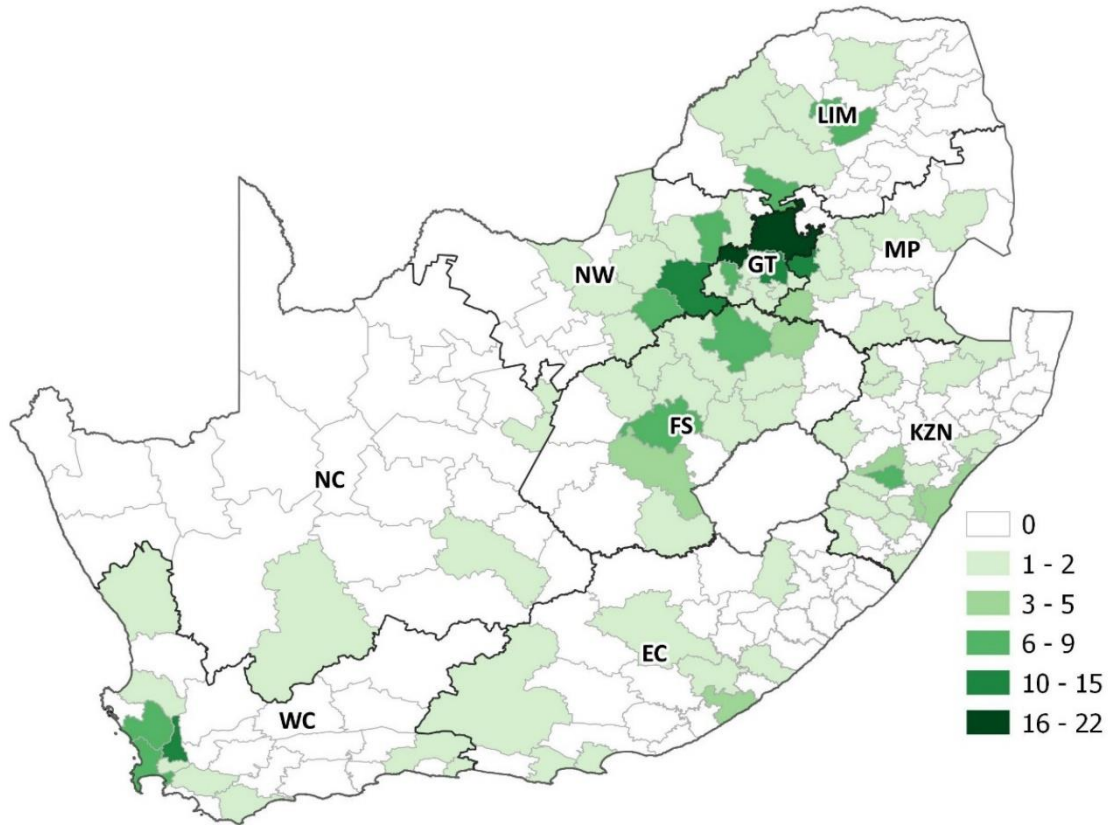
Figures 6 and 7 show the local municipal density of the broiler and egg sector farms respectively. The local municipal districts containing the highest number of broiler industry farms are Victor Khanye (38) and Lekwa (35) in Mpumalanga and Mkhambathini (35) in KwaZulu-Natal. The highest density of egg industry farms is found in the local municipal districts of City of Tshwane (22) and Mogale City (17), both in Gauteng.



Source: SAPA

Created by: Leading Edge Poultry Software

Figure 6: Density of broiler industry farms per local municipality



Source: SAPA

Created by: Leading Edge Poultry Software

Figure 7: Density of egg industry farms per local municipality

Figures 8 and 9 indicate the density of broiler and egg sector birds per local municipality. In the broiler industry, the Mpumalanga local municipalities of Victor Khanye and Lekwa have 9.50 and 7.85 million birds respectively. Rustenburg in North West has 7.44 million birds. A total of 2.82 million birds belonging to the egg industry are located in the local municipal district of City of Tshwane in Gauteng. A further 2.25 million are located in Drakenstein, Western Cape and 1.92 million birds in Mogale City, Gauteng.

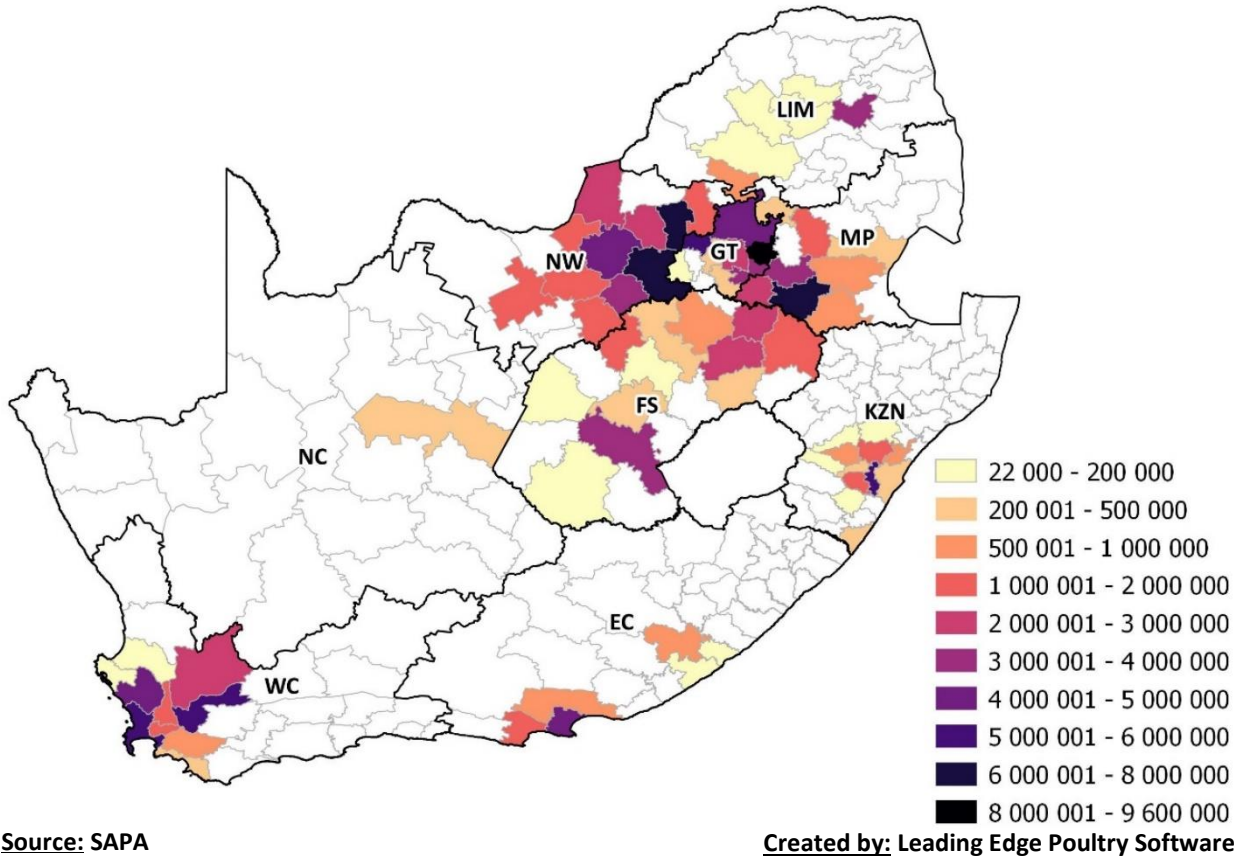


Figure 8: Density of broiler industry birds per local municipality

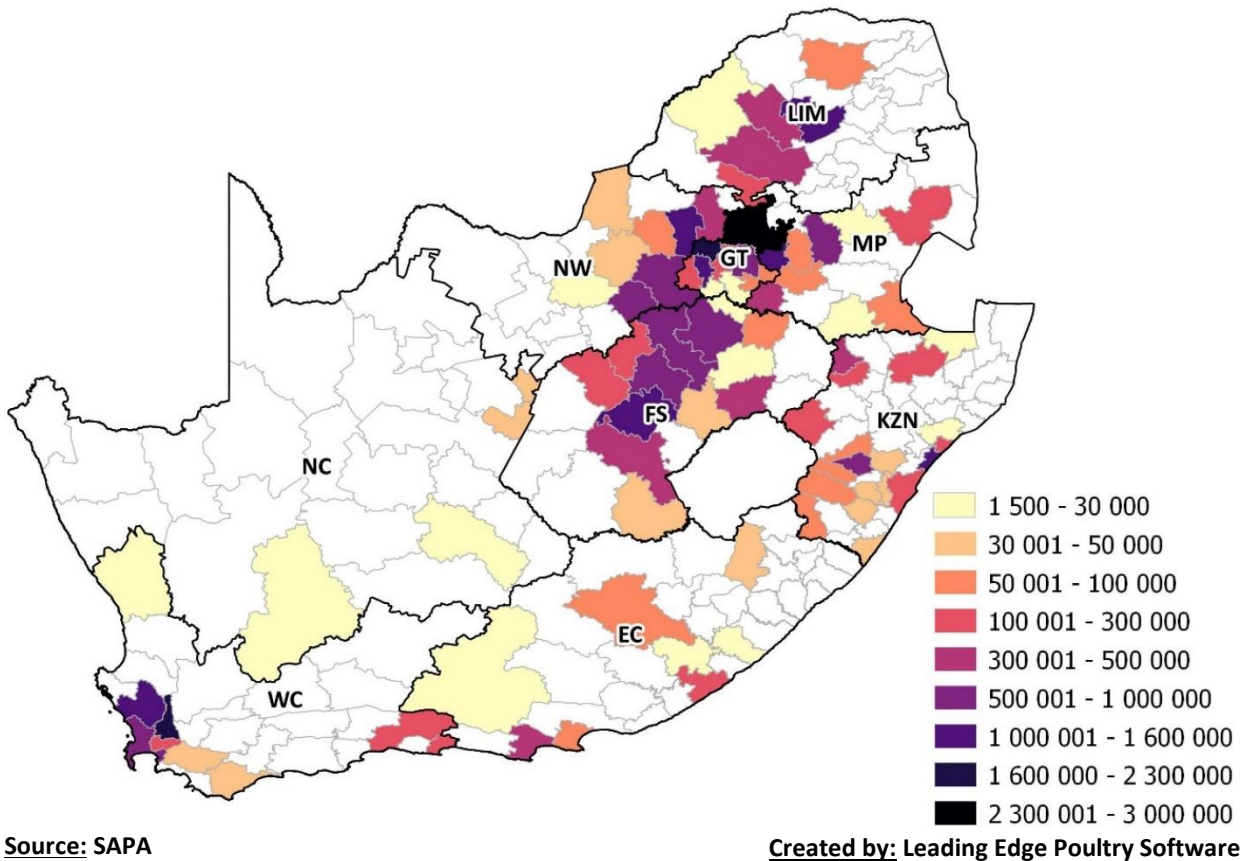


Figure 9: Density of egg industry birds per local municipality

3 Distribution of farms according to bird volumes

Table 3 shows the distribution of farms according to the size of the operation. Tables 4 and 5 provide a breakdown of producers that are registered on the AI database, according to the three categories: subsistence, small commercial and large commercial farmers. The number of subsistence farmers reported here represents those that take part in SAPA's statistical surveys. It is not an accurate representation of the total number in South Africa.

Table 3: Distribution of farms according to bird capacity

Number of birds		Number of farms		
From	To	Broiler industry	Egg industry	Total
700 001	and more	17	0	17
600 001	700 000	9	4	13
500 001	600 000	16	2	18
400 001	500 000	20	7	27
300 001	400 000	88	10	98
200 001	300 000	136	18	154
100 001	200 000	131	60	191
90 001	100 000	9	3	12
80 001	90 000	18	11	29
70 001	80 000	8	16	24
60 001	70 000	18	5	23
50 001	60 000	16	14	30
40 001	50 000	49	17	66
30 001	40 000	72	24	96
20 001	30 000	14	22	36
15 001	20 000	11	15	26
10 001	15 000	12	11	23
5 001	10 000	4	14	18
1 501	5 000	4	7	11
501	1 500	0	3	3
101	500	0	0	0
1	100	39	19	58
Total		691	282	973

Table 4: Classification of broiler industry farms

Category	Birds/cycle	No. farms
Subsistence farmers	1 - 1 500	39
Small commercial farmers	1 501 - 40 000	117
Large commercial farmers	40 001 +	535
Total		691

Table 5: Classification of egg industry farms

Category	No. birds	No. farms
Subsistence farmers	1 - 500	19
Small commercial farmers	501 - 50 000	113
Large commercial farmers	50 001 +	150
Total		282

*Data collated by Silverpath Consulting
Report compiled by Leading Edge Poultry Software*

Disclaimer: The views expressed in SAPA STATS reports reflect those of SAPA in collaboration with its independent consultants and do not constitute any specific advice as to decisions or actions that should be taken. While every care has been taken in preparing documents no representation nor warranty or any expressed or implied undertaking is given and no responsibility or liability is accepted by SAPA as to the accuracy or completeness of the information contained herein whether as electronic data or as a finished report. SAPA or its independent consultants do not accept responsibility or liability for any damages of whatsoever nature which any person may suffer as a result of any decision or action taken on the basis of the information contained herein. All opinions and estimates contained in the reports may be changed after publication without notice.

These statistical reports and/or electronic data are placed in the public domain and may be used by other parties conditional to the source of the data/ report being attributed to SAPA.