



DISTRIBUTION OF CHICKENS IN SOUTH AFRICA

**FOR THE PERIOD: October 2023 to December 2023
(4Q2023)**

Section	CONTENTS	Page
1	Provincial distribution of egg and broiler industry birds in South Africa	2
2	The number, type and distribution of poultry farms in South Africa	4
3	Distribution of farms according to bird volumes	8

Table	TABLES	Page
1	Provincial distribution of chickens in South Africa	2
2	Number of farms on the AI database	4
3	Distribution of farms according to bird capacity	8
4	Categorisation of broiler industry farms	8
5	Categorisation of egg industry farms	9

Figure	MAPS	Page
1	Provincial distribution of the national chicken flock	3
2	Provincial distribution of the broiler industry flock	3
3	Provincial distribution of the egg industry flock	4
4	Geographical location of broiler industry farms	5
5	Geographical location of egg industry farms	5
6	Density of broiler industry farms per local municipality	6
7	Density of egg industry farms per local municipality	6
8	Density of broiler industry birds per local municipality	7
9	Density of egg industry birds per local municipality	7

1. Provincial distribution of egg and broiler industry birds in South Africa

The provincial distribution of chicken farms, in terms of the broiler and egg industries, is given in Table 1. These figures were recorded during the course of the avian influenza (AI) survey, where producers provide data on actual bird numbers in addition to laboratory test results.

Table 1: Provincial distribution of chickens in South Africa						
Province	Broiler industry		Egg industry		Total	
	birds	%	birds	%	birds	%
E. Cape	8 308 955	6.2	948 765	3.1	9 257 720	5.6
Free State	13 628 612	10.1	4 510 141	14.6	18 138 753	10.9
Gauteng	15 445 850	11.4	7 679 022	24.8	23 124 872	13.9
KwaZulu-Natal	10 520 399	7.8	3 838 972	12.4	14 359 371	8.7
Limpopo	4 580 293	3.4	2 463 290	8.0	7 043 583	4.2
Mpumalanga	26 754 409	19.8	2 482 288	8.0	29 236 697	17.6
North West	32 852 752	24.3	3 698 175	11.9	36 550 927	22.0
N. Cape	273 000	0.2	96 300	0.3	369 300	0.2
W. Cape	22 629 151	16.8	5 242 367	16.9	27 871 518	16.8
Total	134 993 421	100.0	30 959 320	100.0	165 952 741	100.0

Figure 1 gives the total number of chickens per province, as per the above table. The province of North West is home to the largest number of birds, followed by Mpumalanga. The provincial distributions of broiler and egg industry chickens are given in Figures 2 and 3 respectively.

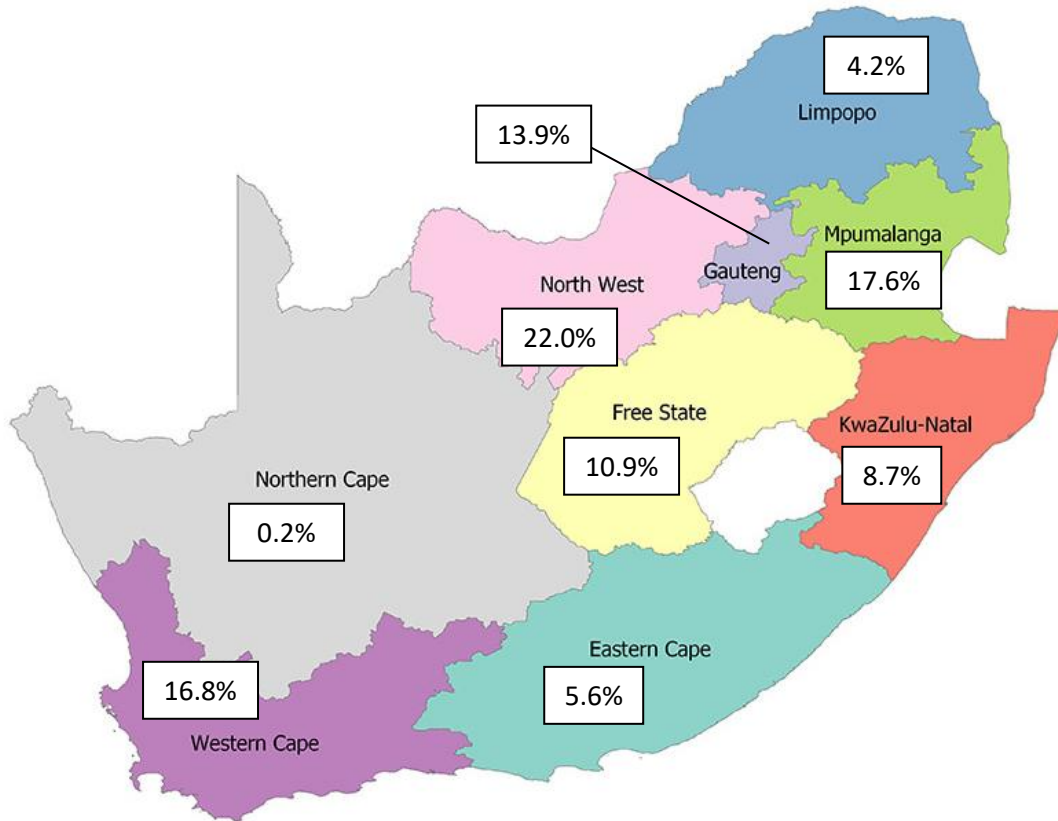


Figure 1: Provincial distribution of the national chicken flock

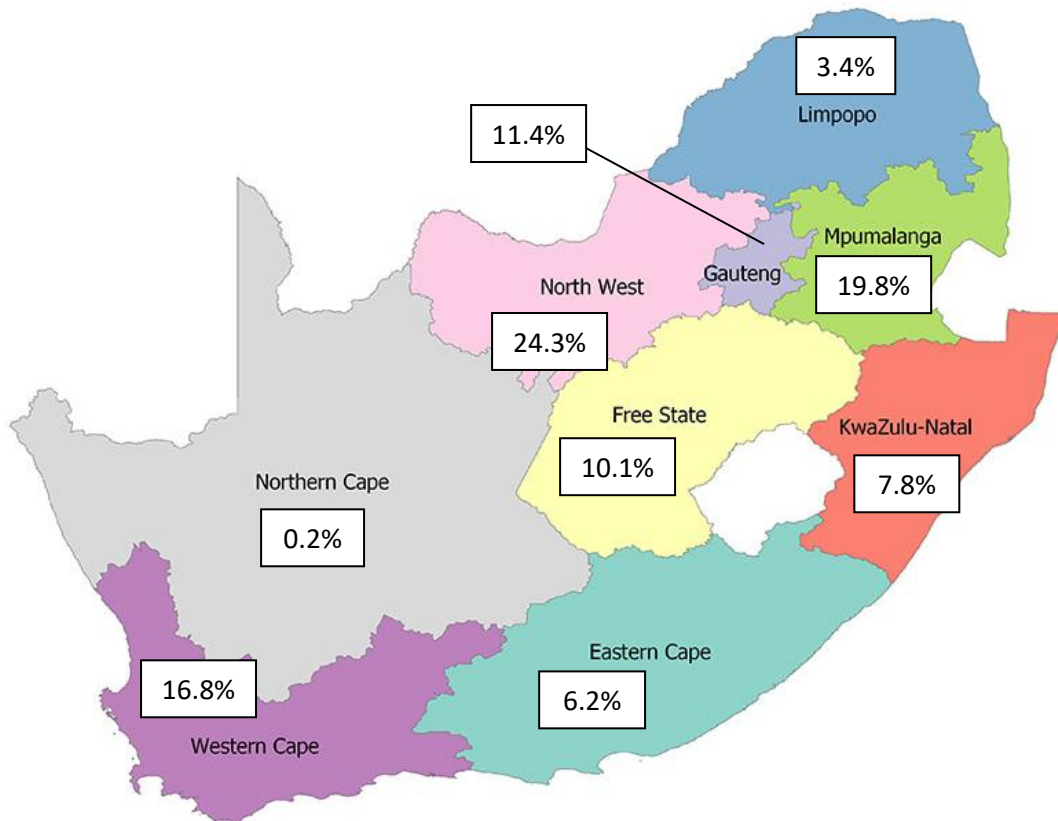


Figure 2: Provincial distribution of the broiler industry flock

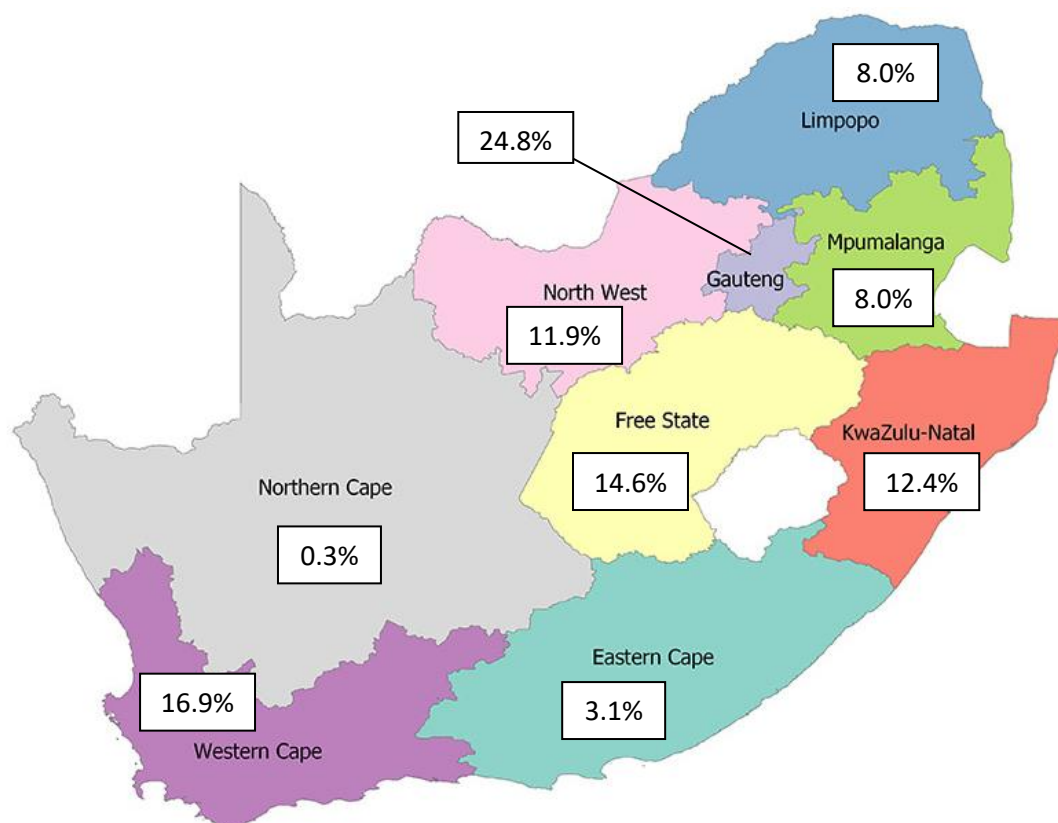


Figure 3: Provincial distribution of the egg industry flock

2. The number, type and distribution of poultry farms in South Africa

The number of farms on the AI database is given in Table 2. It also shows the birds numbers for the different farm types according to information supplied by producers.

	Farms	Birds
Broiler industry		
GGP and grandparent farms	23	575 885
Parent rearing farms	80	5 301 502
Broiler breeder farms	136	8 577 936
Broiler rearing farms	448	120 538 098
TOTAL	687	134 993 421
Egg industry		
Grandparent farms	6	23 559
Parent rearing farms	6	151 150
Layer breeder farms	16	589 629
Pullet rearing farms	41	7 993 140
Layer farms (egg producing)	208	22 201 842
TOTAL	277	30 959 320
Broiler and egg industries	964	165 952 741

The nationwide distribution of broiler and egg sector farms in the AI database is shown in Figures 4 and 5 respectively. The pie charts show the percentage of farms and birds in each province. North West has 21% of the farms and 24% of the broiler sector birds. It is closely followed by Mpumalanga. Gauteng has the highest percentages of egg sector farms (24%) and birds (26%).

Source: SAPA

Created by: Leading Edge Poultry Software

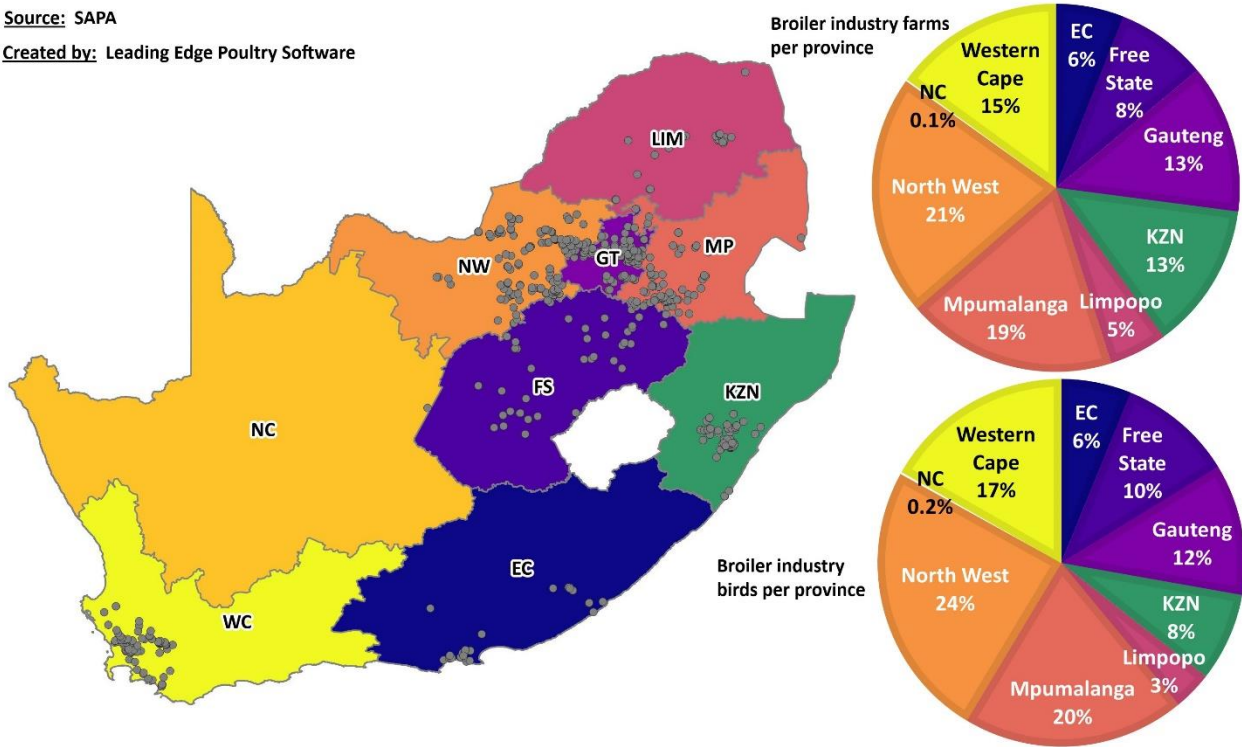


Figure 4: Geographical location of broiler industry farms

Source: SAPA

Created by: Leading Edge Poultry Software

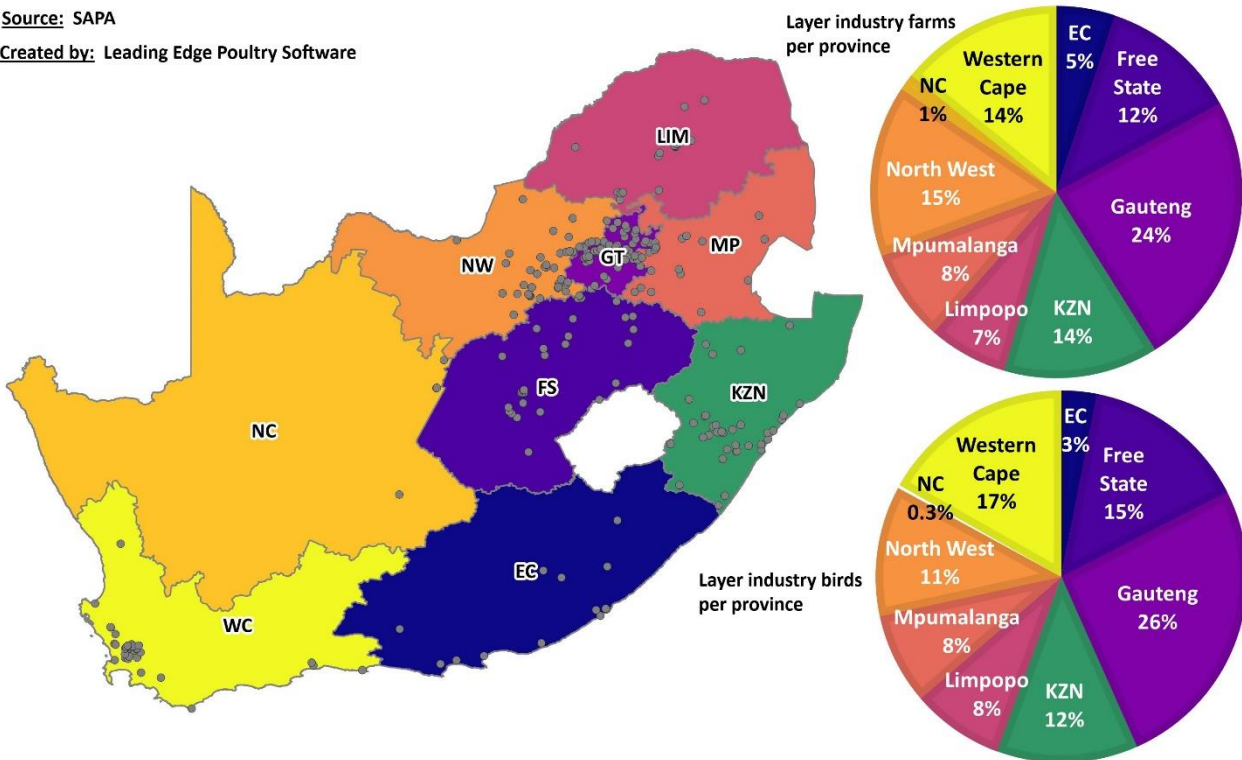


Figure 5: Geographical location of egg industry farms

Figures 6 and 7 show the local municipal density of the broiler and egg sector farms respectively. The local municipal districts containing the highest number of broiler industry farms are Victor Khanye (37) and Lekwa (35) in Mpumalanga and Mkhambathini (35) in KwaZulu-Natal. The highest density of egg industry farms is found in the local municipal districts of City of Tshwane (21) and Mogale City (16), both in Gauteng.

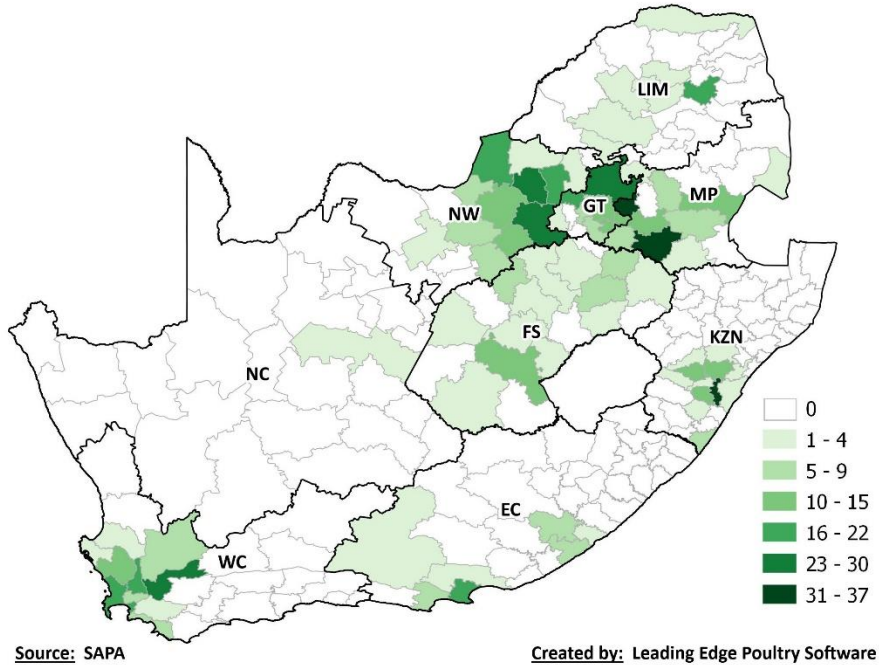


Figure 6: Density of broiler industry farms per local municipality

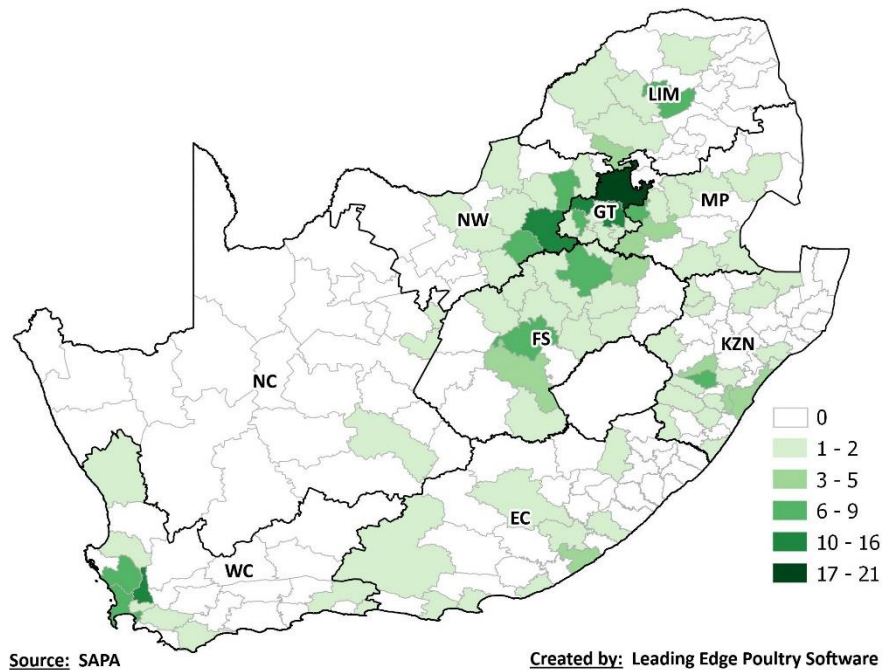


Figure 7: Density of egg industry farms per local municipality

Figures 8 and 9 indicate the density of broiler and egg sector birds per local municipality. A total of 9.14 million birds belonging to the broiler industry are located in the local municipal district of Victor Khanye in

Mpumalanga. A further 7.85 million birds are located in Lekwa, also in Mpumalanga, and 7.32 million in Rustenburg, North West. In the egg industry, the Gauteng local municipality of City of Tshwane has 2.84 million birds. Drakenstein in Western Cape has 2.26 million birds and Mogale City, also in Gauteng, has 2.09 million birds.

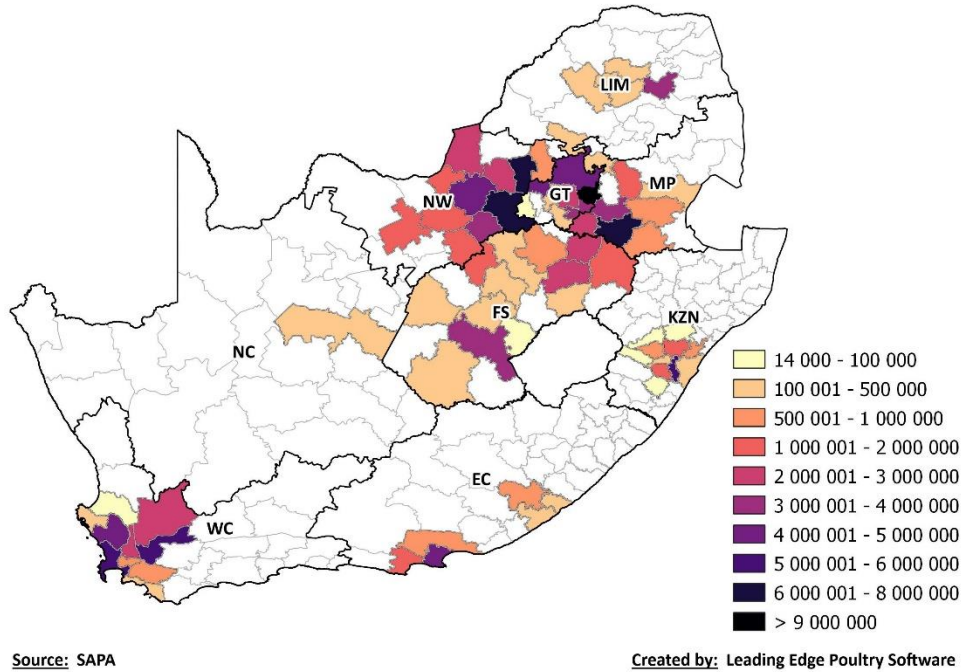


Figure 8: Density of broiler industry birds per local municipality

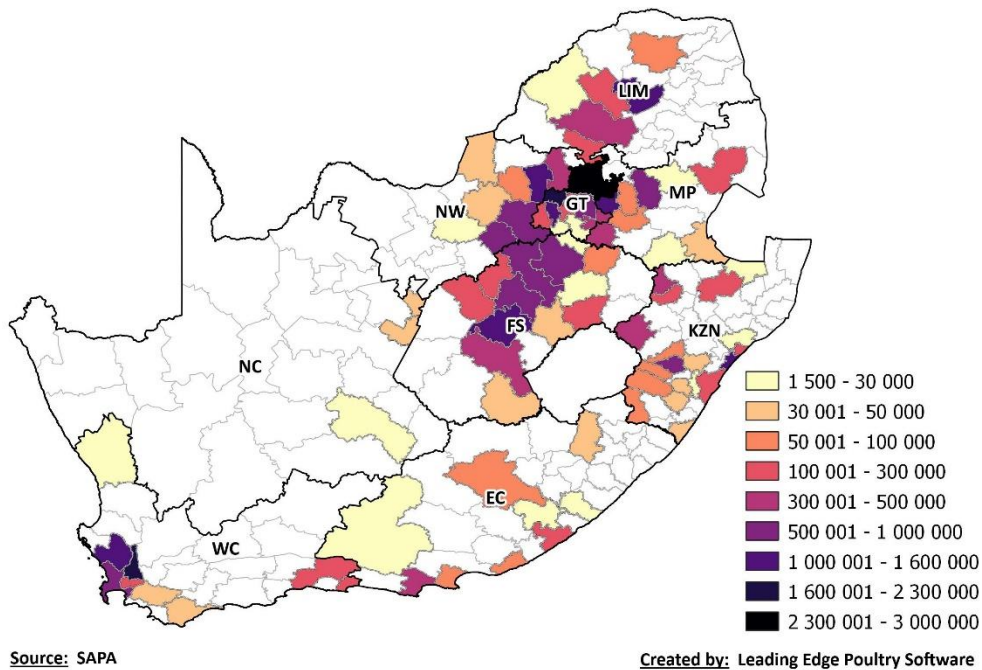


Figure 9: Density of egg industry birds per local municipality

3. Distribution of farms according to bird volumes

Table 3 shows the distribution of farms according to the size of the operation. Tables 4 and 5 provide a breakdown of producers that are registered on the AI database, according to the three categories: subsistence, small commercial and large commercial farmers. The number of subsistence farmers reported here represents those that take part in SAPA's statistical surveys. It is not an accurate representation of the total number in South Africa.

Table 3: Distribution of farms according to bird capacity				
Number of birds		Number of farms		
From	To	Broiler industry	Egg industry	Total
700 001	and more	17	1	18
600 001	700 000	9	3	12
500 001	600 000	16	2	18
400 001	500 000	19	10	29
300 001	400 000	83	9	92
200 001	300 000	134	19	153
100 001	200 000	133	58	191
90 001	100 000	10	4	14
80 001	90 000	19	13	32
70 001	80 000	7	14	21
60 001	70 000	17	6	23
50 001	60 000	16	11	27
40 001	50 000	50	19	69
30 001	40 000	69	22	91
20 001	30 000	13	21	34
15 001	20 000	10	15	25
10 001	15 000	13	12	25
5 001	10 000	4	14	18
1 501	5 000	4	7	11
501	1 500	0	3	3
101	500	0	1	1
1	100	44	13	57
Total		687	277	964

Table 4: Categorisation of broiler industry farms		
Category	Birds/cycle	No. farms
Subsistence farmers	1 - 1 500	44
Small commercial farmers	1 501 - 40 000	113
Large commercial farmers	40 001 +	530
Total		687

Table 5: Categorisation of egg industry farms		
Category	No. birds	No. farms
Subsistence farmers	1 - 500	14
Small commercial farmers	501 - 50 000	113
Large commercial farmers	50 001 +	150
Total		277

*Data collated by Silverpath Consulting
Report compiled by Leading Edge Poultry Software*

Disclaimer: The views expressed in SAPA STATS reports reflect those of SAPA in collaboration with its independent consultants and do not constitute any specific advice as to decisions or actions that should be taken. While every care has been taken in preparing documents no representation nor warranty or any expressed or implied undertaking is given and no responsibility or liability is accepted by SAPA as to the accuracy or completeness of the information contained herein whether as electronic data or as a finished report. SAPA or its independent consultants do not accept responsibility or liability for any damages of whatsoever nature which any person may suffer as a result of any decision or action taken on the basis of the information contained herein. All opinions and estimates contained in the reports may be changed after publication without notice.

These statistical reports and/or electronic data are placed in the public domain and may be used by other parties conditional to the source of the data/ report being attributed to SAPA.